

VRX Company

Inc.

Application Note:
Setup of
SAM4s ER-5215M
for Text Inserter.

NOTICES

This document is copyright by VRX Company Inc. Copyright law prohibits reproduction of any part of this document in any form without express written permission.

Notice: The contents of this document are subject to change without notice. At VRX Company Inc., we have made every effort to ensure the accuracy of the contents of this document. However, we reserve the right to change this document for improvement and to correct errors without notice. If you find errors, please bring them to our attention. Our contact information is located at the bottom of this page.

Table of Contents

[Abbreviations and Phrases.....](#) [2](#)
[Typical Cable Connections.....](#) [3](#)
[SAM4s Address Settings.....](#) [3](#)
 [Programing Key sequence.....](#) [4](#)
 [Suggested Settings for Text Inserter.....](#) [4](#)
 [ER-5215M RS-232 Option Chart.....](#) [4](#)
 [Integration Test.....](#) [6](#)
[Having Trouble?.....](#) [6](#)
[Can You Help Us?.....](#) [6](#)

Abbreviations and Phrases

ASCII	American Standard Code for Information Interchange
JOURNAL PRINTER	A receipt printer connected to a POS, which records all transactions. This printer may be located in a back office.
Pole Display	Usually a serial text display device with two lines of 20 characters. Common types are LCD and Vacuum Florescent.
POS	Point of Sale
SAM4s	Point of Sale Cash Register Manufacturer, formerly Samsung.

Table 1 Abbreviations used in this manual

Summary

The objective of this document is to show the standard connection to a SAM4s cash register and the typical serial port settings for compatibility with a Text Inserter. The example use is a SAM4s ER-5215M. Use similar procedures on other SAM4s models.

VRX Company does not recommend using a text inserter on most receipt printers. ONLY if the installer or end customer can configure the POS to print the receipt “line by line”, will the system be user friendly. SAM4s cash registers do not appear to have such a line-by-line setting.

Typical Cable Connections.

Use a straight through cable with the appropriate gender for connection from the cash register serial port to the Serial Input on the Text Inserter. Typical this is a male-to-male cable or a male to female cable with a male-to-male gender adapter. To complete the flow control hand shaking required for when the cash register is set up for Journal Printer applications use the VRX SAM4s Handshake adapter. Connect it at the Serial Output of the Text Inserter. See the diagram below.

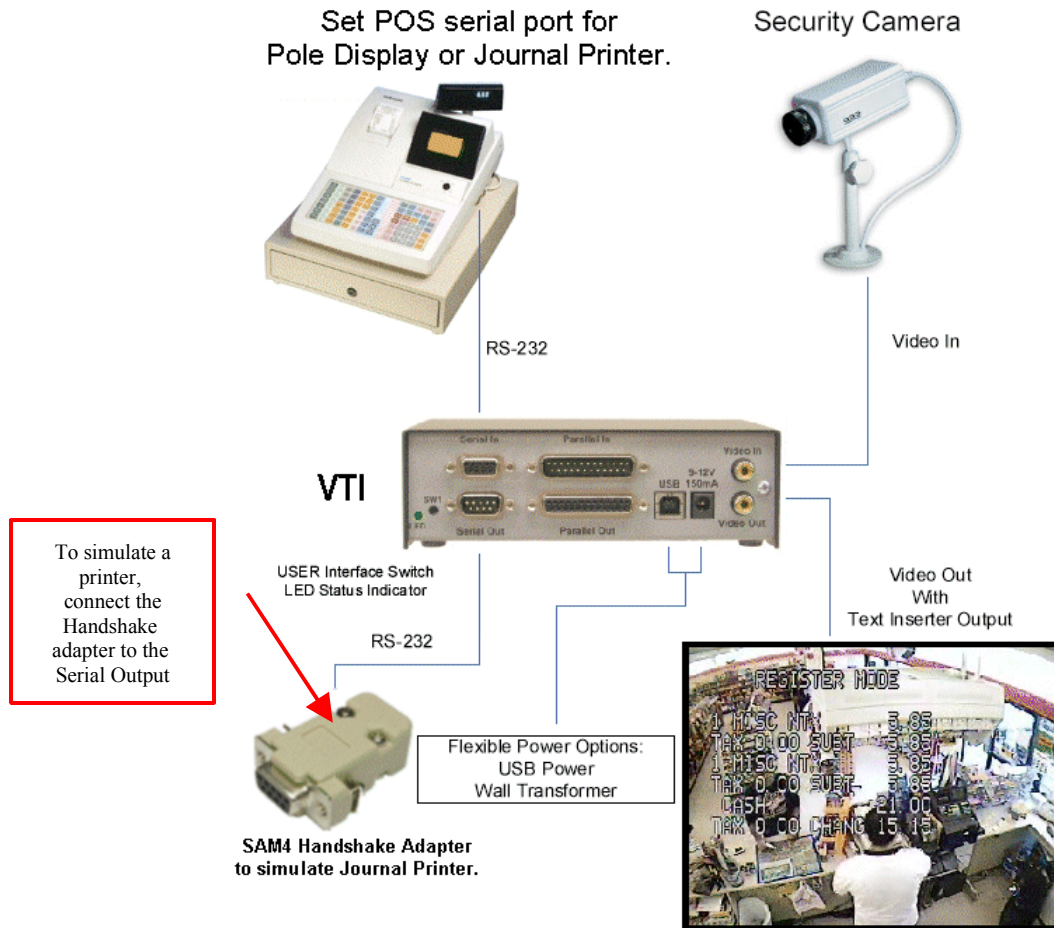


Figure 1. SAM4s Cable Diagram, Text Inserter as Journal Printer

SAM4s Address Settings.

CAUTION! Make the following changes to the POS cash register only with the permission and participation of the store manager or IT people. Use caution not to change any other setting. VRX Company cannot be responsible for the changes to address settings of the cash register. A cash register technician may be required to assist with the proper address settings. These settings require the register be in the S (Service) mode. Programing in the P (program) mode will corrupt other settings on your register.

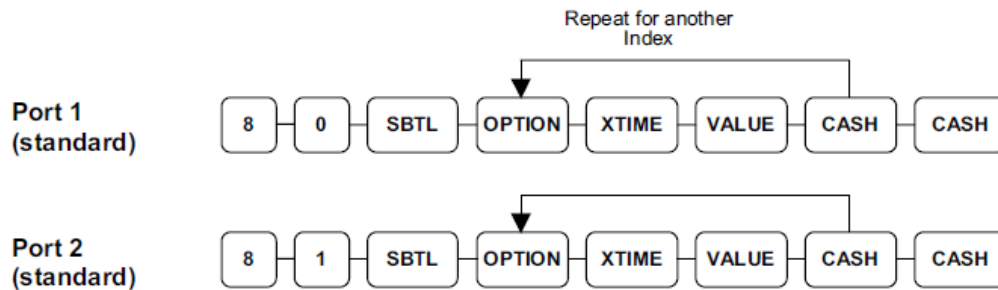
Configure the cash register serial port so that the cash register sends the appropriate data to the serial port in a format compatible for text insertion. SAM4s refers to this configuration as address setting.

Programing Key sequence

The cash register owner is responsible for programming the register and must provide any technical support as required. This information is provided for reference only.

You must define the device(s) attached to the RS-232C communications ports, and the options for the device(s).

1. Using the "C" key, turn the control lock to the **S** position (just beyond P).
2. Enter **8 0** (enter **8 1** to program the second port) and press the **SBTL** key.
3. Refer to the chart RS-232C option chart that follows and enter the number of the option (N1) you wish to program and press the **X/TIME** key.
4. Enter the value (N2) that represents your selection and press the **CASH** key.
5. Repeat from step 3 for any additional options you wish to program.
6. Press **CASH** to exit the program.



Suggested Settings for Text Inserter

Settings summary: 9600 bps, No parity, 8 data bits, 1 stop bit, Remote Journal Printer, type Epson TM-88. Set the pole display type to Epson even though you will probably not use it.

ER-5215M RS-232 Option Chart

The following chart shows many of the SAM4s ER-5215M address settings. The default and recommended set up values for compatibility with Text Inserter are emphasized by **BOLD** text in the table below.

Address	Option	Value	Selection
1	Baud Rate	0	9600 BPS
		1	1200 BPS
		2	2400 BPS
		3	4800 BPS
		4	19200 BPS
2	Parity	0	NONE
		1	ODD
		2	EVEN
3	Data Bits	0	8 BITS
		1	7 BITS
4	Stop Bits	0	1 BIT

Address	Option	Value	Selection
		1	2 BIT
5	Device Function	0	NONE
		1	PC
		2	SCALE
		3	Remote Journal
		4	Remote Printer
		5	EFT Device
		6	Scanner
		7	COIN
		8	Berg Liquor Dispenser
		9	Pole Display
		10	PDC (Requires V6.1 or later)
6	Initial Feeding Line KP	0 - 20	
7	End Feeding Line KP	0 - 20	
8	Initial Feeding Line Slip	0 - 20	
9	Print Line On Guest Check	0 - 50	
10	Scale Type	0	NCI
		1	CAS
11	Printer Type	0	NONE
		1	SRP-100 / SAM4S ELLIX10
		2	SRP-270/SRP-500
		3	SRP-300
		4	SRP-350
			SAM4s ELLIX20
		5	CITIZEN 3550
		6	CITIZEN 810
		7	CITIZEN 230
		8	EPSON TM T88-2
		9	EPSON U200
		10	EPSON U295
		11	EPSON U300
		12	EPSON U325
		13	EPSON U375
		14	STAR SP-200
		15	STAR SP-298
16	STAR SP-300		
17	STAR TSP-200		
12	Display Type	0	EPSON
		1	ICD

Integration Test

Test the setup with the Text Inserter. Make a sale and view the Video Out from the Text Inserter on a monitor. The monitor needs to be close because the typical set up of the Text Inserter is for inserted text to erase after 10 seconds of Journal Printer inactivity.

Having Trouble?

If you are having compatibility trouble with the POS system and your Text Inserter, please look for updated information on our web site at www.vrxinc.com

Contact the VRX Company Inc at support@vrxinc.com or by calling 1-866-543-8398 and choosing support.
Snail Mail at: VRX Company Inc. PO Box 4663, Maryville, TN 37802-4663

Can You Help Us?

If you found this helpful, can you help VRX Company Inc? We would always appreciate sample video or still images of our Text Inserter in your application. We desire clear images suitable for advertising. It is best if the video does NOT include real customers. We would like permission from you to use the video for our advertising. You can send video by email, mail a DVD, or call us at the number below for special instructions.

Refer a friend. If you have a friend who would benefit from text insertion contact us for a coupon and earn a referral fee for yourself.