

**VRX** Company Inc.

# VRX Company Inc.

## Application Note: VersiTouch

Notes on setup of POS software for Text Insertion compatibility.

\*Versitouch is a point of sale system by Restaurant Computer Solutions.

# **VRX** Company Inc.

## **NOTICES**

This document is copyright by VRX Company Inc. Copyright law prohibits reproduction of any part of this document in any form without express written permission.

The contents of this document are subject to change without notice. At VRX Company Inc., we have made every effort to ensure the accuracy of the contents of this document. However, we reserve the right to change this document for improvement and to correct errors without notice. If you find errors, please bring them to our attention. Our contact information is located at the end of this document.

## **1 Abbreviations and Phrases**

CCTV	Closed Circuit Television aka security camera, recording and monitor system.
COM port	Communications port also referred to as a serial port or RS232 port. Older equipment uses a DB25 male connector and, since 1986 and the introduction of the IBM AT persona computer, a DB9 Male connector on the computer or Data Terminal Equipment end.
DB9	The connector with a “D” shaped metal shell containing 9 pins. On most IBM PCs the parallel port is a DB9. Older computers systems and even modern serial printers use the DB25 for serial connection per the specification RS232/EIA232.
POS system	Point of Sale system. A cash register or a PC with software running as a cash register.
Serial Port	See COM port above.
Text Inserter	Loss prevention technology integrating POS to CCTV equipment.

**Table 1 Abbreviations used in this application note**

## **2 Summary**

VRX Company Inc customer experience with VersiTouch identified two noteworthy items for success.

The serial port must be configured for a pole display and the serial port requires flow control and so a loop back adapter connecting pin 4 to 6 and pin 7 to 8 is required.

## 3 Passport Setup Changes

Detailed notes on setup changes follow.

**Warning:** Because any point of sale system is mission critical to the owner, the store owner or a manager with an appropriate **Operator ID** and **Password** must take responsibility to make these changes. The VRX Company Inc. can only advise and cannot know all of the details of the point of sale software current and future configurations. If in doubt have a VersiTouch technician preform the setup operations.

### 3.1 Log in to the Terminal

The owner or manager should log into the terminal with appropriate user name and pass word.

### 3.2 Enter V Station Properties

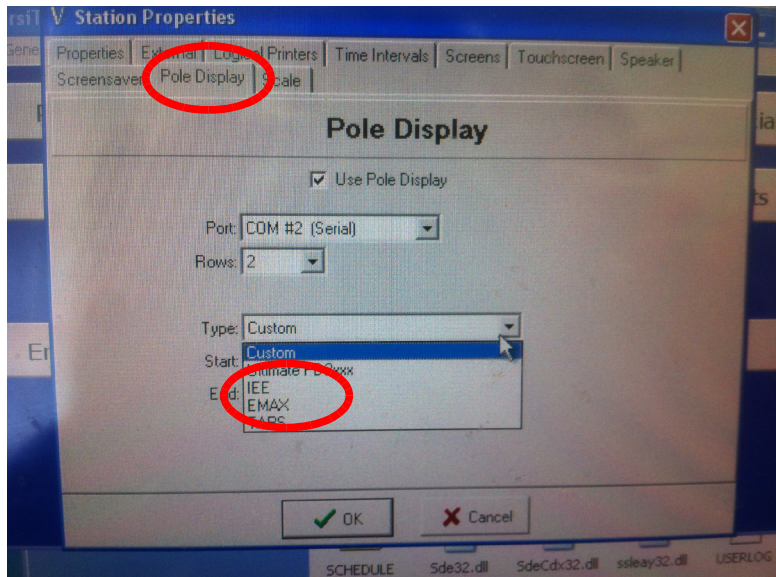
Enter the V Station Properties and select the Pole Display Tab.

Select the COM port to which the Text Inserter is to be connected (and pole display if used).

Set the rows for 2.

Set the pole display type. (Assume for this document the type: IEE)

Press OK to save the changes.  
Exit the menu and reboot the POS.



## 4 Satisfying Serial Port Flow Control

If no actual pole display is connected to the same serial port as the VR2004, a loop back adapter will be required to satisfy the flow control requirements of the Windows(TM) version of the POS software.

If necessary, construct a loop back adapter which has a DB9 Female connector and connects pin 4 to pin6 and pin 7 to pin 8. **DO NOT CONNECT PINS 2 and 3.** Connect the adapter on the Serial Output of the Text Inserter.



## 5 VR2004 User Setup For Pole Display Type

Observe the video output of the Text Inserter on a TV or monitor.

Enter the user interface by briefly pressing SW1.

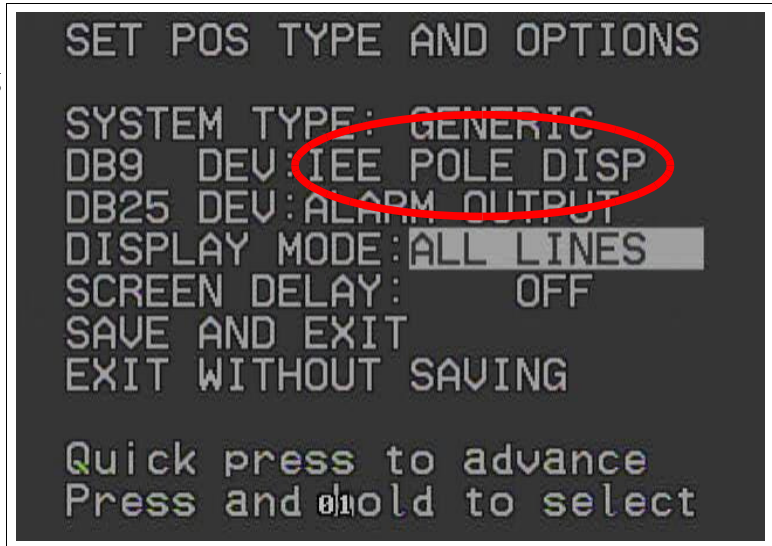
*Navigate the highlighted cursor line around the menu with a quick push of SW1. Enter menus or change items by pressing and holding SW1 for about 3 seconds.*

Navigate to the **Set POS Menu**

Navigate to the **DB9 DEV** line and set for the appropriate type. Example **IEE Pole ISP**.

Navigate to **SAVE AND EXIT**.

**EXIT** the Main Menu to normal operation of the Text Inserter.



## 6 Test

Observe normal transactions similar to the image to the right (Disclaimer, this is not an image from VersiTouch).

Note: Inserted text will disappear after the period set in the TIME OUT of the user settings.



## 7 Having Trouble?

If you are having compatibility trouble with the Text Inserter, please look for updated information on our web site at [www.vrxinc.com](http://www.vrxinc.com)

Contact the VRX Company Inc at [support@vrxinc.com](mailto:support@vrxinc.com) or by calling 1-866-543-8398.

Snail Mail at: VRX Company Inc. PO Box 4663, Maryville, TN 37802-4663