

VRX Company^{Inc.}

Application Note:

Penny Lane Point of Sale
Customer Display (Pole Display)

NOTICES

This document is copyright by VRX Company Inc. Copyright law prohibits reproduction of any part of this document in any form without express written permission.

Notice: The contents of this document are subject to change without notice. At VRX Company Inc., we have made every effort to ensure the accuracy of the contents of this document. However, we reserve the right to change this document for improvement and to correct errors without notice. If you find errors, please bring them to our attention. Our contact information is located at the bottom of this page.

Table of Contents

Abbreviations and Phrases.....	2
Summary.....	3
Connect Text Inserter to the POS and CCTV.....	3
Setup POS for Customer Display.....	3
Text Inserter in Action.....	5
Having trouble?.....	5

Abbreviations and Phrases

ASCII	American Standard Code for Information Interchange
CCTV	Closed Circuit Television
Customer Display	See Pole Display
Pole Display	Usually a serial text display device with two lines of 20 characters. Common types are LCD and Vacuum Florescent.
POS	Point of Sale

Table 1 Abbreviations used in this manual

Summary

This document contains some screen shots showing the setup of a serial port on Penny lane point of sale software for a customer display (pole display)

VRX Company does not recommend using a Text Inserter on most receipt printers. Use the Penny Lane point of sale customer display for your loss prevention requirements.



Illustration 1: Text Inserter from a POS on to CCTV Video.

Connect Text Inserter to the POS and CCTV

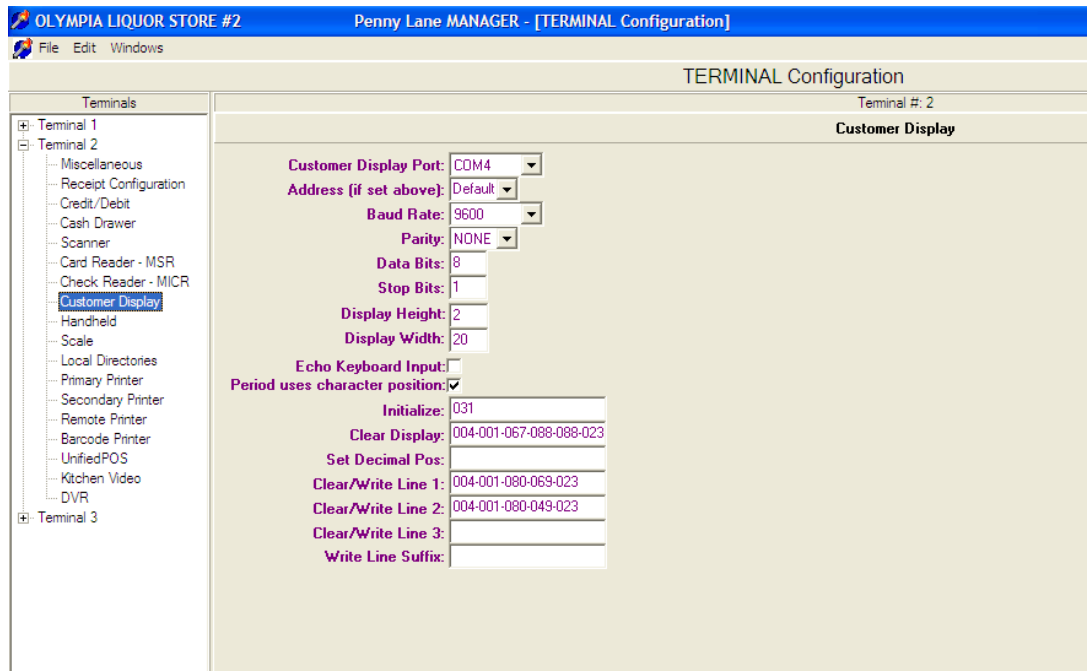
Identify a COM port to which to connect the Text Inserter. If necessary, use a USB to COM port adapter. Install such an adapter per the instructions provided with the adapter. Installation of the USB to COM port adapter is beyond the scope of this document.

Connect a DB9 serial cable from the COM port to the Serial Input on the Text Inserter.

Connect a monitor to the Video Output of the Text Inserter to a monitor. If necessary make a temporary connection directly to a monitor or make a permanent connection into the CCTV system. It is best if you can see the monitor from the POS as you make the setup changes.

Setup POS for Customer Display

Using the MANAGER access select the appropriate terminal and set up a Customer display on the COM port to which the Text Inserter is connected.



Detail setup of Serial Port

Customer Display Port: COM4
 Address (if set above): Default
 Baud Rate: 9600
 Parity: NONE
 Data Bits: 8
 Stop Bits: 1

Detail setup of Number of Display Character and Lines

Display Height: 2
 Display Width: 20

Detail setup of Customer Display command set

Echo Keyboard Input:
 Period uses character position:
 Initialize: 031
 Clear Display: 004-001-067-088-088-023
 Set Decimal Pos:
 Clear/Write Line 1: 004-001-080-069-023
 Clear/Write Line 2: 004-001-080-049-023
 Clear/Write Line 3:
 Write Line Suffix:

These codes are for DSP-800 akd Champion. Set Text Inserter for DB9DEV: DSP-800.

Possible alternate command set settings

Caution the Logic Controls settings have not yet been tried.

Setting Name	EMAX Command Set	Logic Controls Command Set
Echo Keyboard Input	?	?
Period Uses Character Position	Checked	Checked
Initialize	033-035-049	_031
Clear Display	033-035-049	_031
Clear / Write Line 1	033-035-050	_031
Clear / Write Line 2		_013-010
Clear / Write Line 3		
Write Line Suffix:		

Text Inserter in Action

Test the Text Inserter by making a transaction.

Having trouble?

If you are having compatibility trouble with the POS system and your Text Inserter, please look for updated information on our web site at www.vrxinc.com

Contact the VRX Company Inc at support@vrxinc.com or by calling 1-866-543-8398 9-5 Eastern Time.
Snail Mail at: VRX Company Inc. PO Box 4663, Maryville, TN 37802-4663