

VRX Company^{Inc.}

Application Note:
QuickBooks Point Of
Sale[®] setup for Pole
Display

NOTICES

This document is copyright by VRX Company Inc. Copyright law prohibits reproduction of any part of this document in any form without express written permission.

Notice: The contents of this document are subject to change without notice. At VRX Company Inc., we have made every effort to ensure the accuracy of the contents of this document. However, we reserve the right to change this document for improvement and to correct errors without notice. If you find errors, please bring them to our attention. Our contact information is located at the bottom of this page.

Table of Contents

Abbreviations and Phrases.....	2
Summary.....	3
Connect Text Inserter to the POS and CCTV.....	3
Setup POS for Pole Display.....	3
Text Inserter in Action.....	5
Having trouble?.....	5

Abbreviations and Phrases

ASCII	American Standard Code for Information Interchange
CCTV	Closed Circuit Television
Pole Display	Usually a serial text display device with two lines of 20 characters. Common types are LCD and Vacuum Florescent.
POS	Point of Sale

Table 1 Abbreviations used in this manual

Summary

The objective of this document is to define the setup process in QuickBooks Point Of Sale® for compatibility with a Text Inserter. The method of compatibility will be to interface the Text Inserter as if it is a Logic Controls pole display.

A Text Inserter can find application with many serial devices such as but not limited to POS systems, electronic scales and GPS receivers. The following discussion focuses on POS systems but the concepts involved are useful in most applications.



Illustration 1: QuickBooks Point Of Sale Text On Video

VRX Company does not recommend using a Text Inserter on most receipt printers. Use the QuickBooks Point Of Sale® pole display for your loss prevention requirements.

Connect Text Inserter to the POS and CCTV

Identify a COM port to which to connect the Text Inserter. If necessary, use a USB to COM port adapter. Installation of the USB to COM port adapter is beyond the scope of this document.

Connect a DB9 serial cable from the COM port to the Serial Input on the Text Inserter.

Connect the VRX Loop Back adapter to the Serial Output of the Text Inserter. The loop back adapter satisfies the flow control requirements of the COM port as setup by the POS system.

If the system will have a real pole display the Loop Back adapter is not necessary. Connect the pole display to the Serial Output of the Text Inserter. A USB pole display will not work. The pole display must have a serial interface.

Connect a monitor to the Video Output of the Text Inserter to a monitor. If necessary make a temporary connection directly to a monitor or make a permanent connection into the CCTV system. It is best if you can see the monitor from the POS as you make the setup changes.



Illustration 2: VRX Loop Back Adapter

Setup POS for Pole Display

Set up a Logic Controls pole display on the COM port to which the Text Inserter is connected..

Run QuickBooks Point Of Sale.

Enter the hardware setup wizard by the menu item **Files**, then **Hardware Setup Wizard**.

Select **Customer Pole Display**.

From the drop down box select the **Logic Controls LD9000/9900 (Serial)** options.

Press the Next button at the bottom.

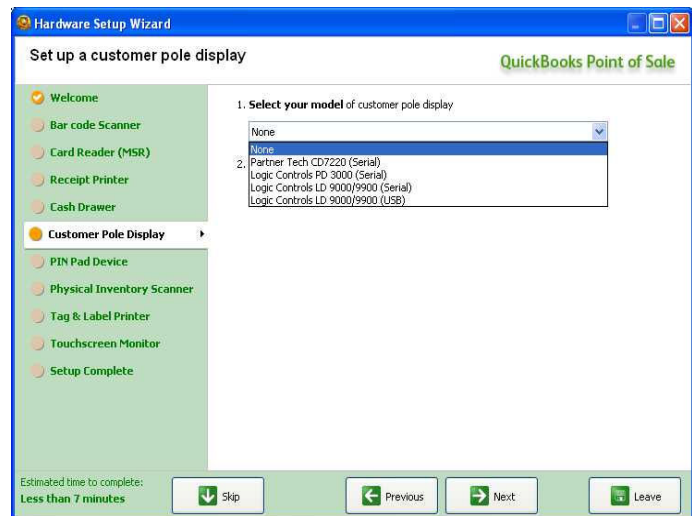


Illustration 3: Hardware Setup Wizard window.

The setup menu changes to enable test of the Pole Display. Use this test to test the Text Inserter.

If necessary, use the drop down box to select the COM port to which the Text Inserter is connected.

While watching the monitor, press the **Test Pole Display** button. The text message should display.

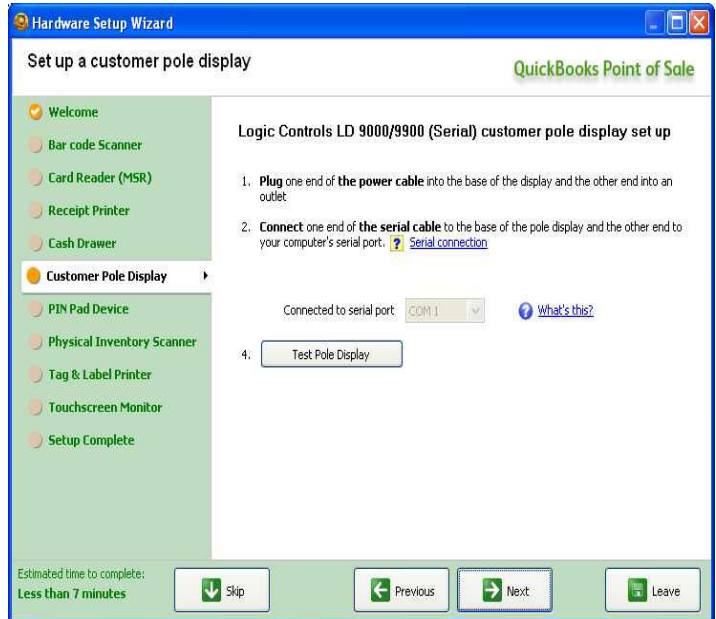


Illustration 4: Set COM and Test of Pole Display / Text Inserter

The message should display:

QB Point of Sale
Pole Display Test

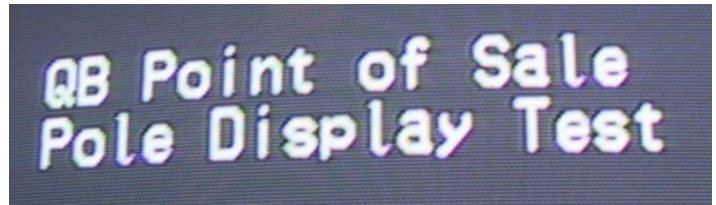


Illustration 5: The Inserted Text

Press the Next button at the bottom.

The setup menu changes to enable you to set the message that displays when now transaction is in progress.

Change the Line 1 and Line 2 text as desired.

You can set the alignment to the Left, Right Center or Scroll. HOWEVER, VRX company does not recommend that you use the scrolling alignment because the Text Inserter will never erase the inserted text.

Press the Next button at the bottom.

Press the Leave button at the bottom to exit the wizard.

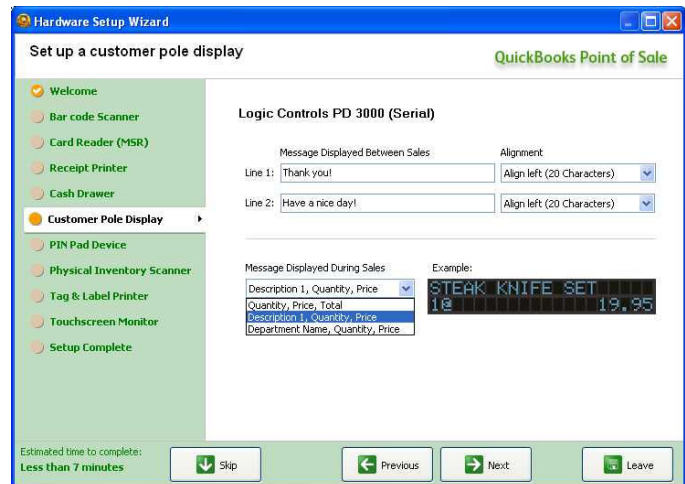


Illustration 6: Set Lines 1&2 Messages and Description

Text Inserter in Action

Test the Text Inserter by making a transaction.



Illustration 7: A Transaction Inserted onto CCTV Video

Having trouble?

If you are having compatibility trouble with the POS system and your Text Inserter, please look for updated information on our web site at www.vrxinc.com

Contact the VRX Company Inc at support@vrxinc.com or by calling 1-866-543-8398 9-5 Eastern Time.
Snail Mail at: VRX Company Inc. PO Box 4663, Maryville, TN 37802-4663