

VR2003

Application Note:

POSitive™ for Windows

Setup for Pole Display

NOTICES

This document is copyright by VRX Company Inc. Copyright law prohibits reproduction of any part of this document in any form without express written permission.

Notice: The contents of this document are subject to change without notice. At VRX Company Inc., we have made ever effort to ensure the accuracy of the contents of this document. However, we reserve the right to change this document for improvement without notice. If you find errors, please bring them to our attention. Our contact information is located at the bottom of this page.

Table of Contents

Abbreviations and Phrases 2
 Objective and Scope 2
 To Connect Text Inserter with Logic Controls™ Pole Display 2
 To Connect Text Inserter with out a Pole Display 3
 Setup POSitive™ for Windows for a Pole Display. 3
 Test the Pole Display Setup. 7
 Still having trouble?..... 8

Abbreviations and Phrases

ASCII	American Standard Code for Information Interchange
IC	Integrated Circuit.
OSD	On Screen Display
PC	Personal Computer
Pole display	Also known as Pole Display
POS	Point of Sale

Table 1 Abbreviations used in this manual

Objective and Scope

The objective of this document is to define the setup process in POSitive™ for Windows for compatibility with the VR2003 text inserter.

Use the information from the supplier of POSitive™ for Windows to install POSitive™ for Windows normally.

This document assumes that the current configuration of your POS terminal has no Pole Display and you want to configure your POS terminal for a Logic Controls™ brand Pole Display. To configure the POS system and text inserter for a pole display other than Logic Controls™ please contact the VRX Company at the phone numbers listed on our web site at www.vrxinc.com or by emailing support@vrxinc.com.

To Connect Text Inserter with Logic Controls™ Pole Display

Turn off power to all components including the POS terminal, the Pole Display and the text inserter.

Disconnect the Pole Display from the DB9 COM port on the POS terminal.

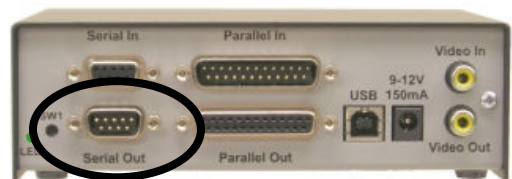
Connect the Pole Display DB9 cable to the serial output of the text inserter. This is the bottom DB9, circled at right.

Using a DB9F to DB9M cable, connect the COM port of the POS terminal to the serial input connector on the text inserter.

Connect the video output of the text inserter to a video monitor.

If you have a camera video feed, connect into the video input of the text inserter.

Contacting the VRX Company Inc.
 Send email to: support@vrxinc.com.



Apply power and make some normal sales transactions to test the system.

The same message that appears on the pole display, with a similar format, should appear on the video monitor. The text on the video monitor automatically erases after a user selectable time. The default time is 10 seconds.

To Connect Text Inserter with out a Pole Display

If you do not have a Pole Display, you will have to install a handshake adapter in your system. The handshake adapter returns a signal to the POS terminal so that it believes a Pole Display is connected and ready to receive data. Pictured at right is the handshake adapter, which VRX Company sells as a separate accessory to the text inserter.

Identify a Pole Display COM port on the POS computer. Choose the lowest number available COM port as a starting point.

Using a DB9F to DB9M cable, connect the COM port to the serial input port on the text inserter.

Connect the video output of the text inserter to a video monitor.

If you have a camera video feed, connect it into the video input of the text inserter.

Apply power and proceed to the next section to set up POSitive™ for Windows for a Logic Controls™ type Pole Display.

During the setup of POSitive™ for Windows, you may discover that POSitive™ for Windows has defaulted to a different COM port and you may have to move the cable to the COM port to which POSitive™ for Windows has defaulted. Please power down the POS terminal and the text inserter before moving the cable.



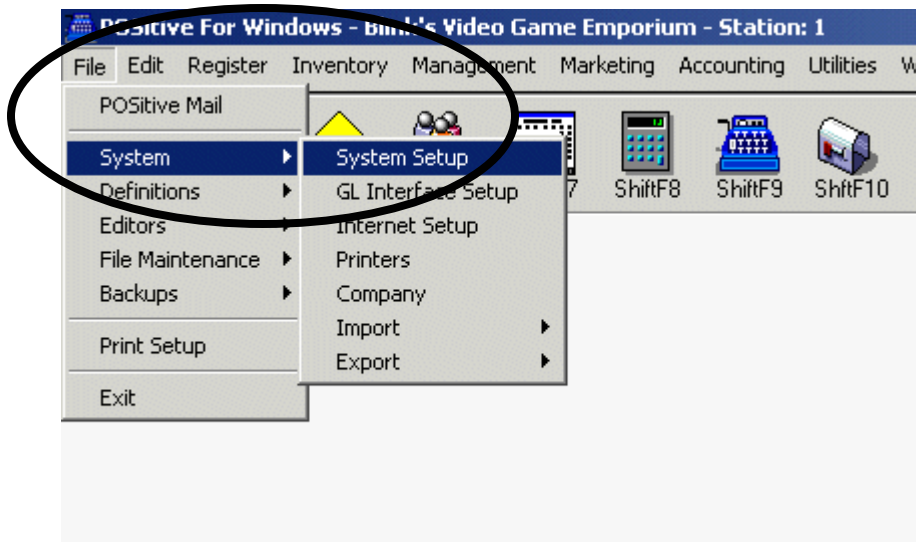
Handshake adapter

Setup POSitive™ for Windows for a Pole Display.

This section will lead you through the setup for a Pole Display of type Logic Controls™.

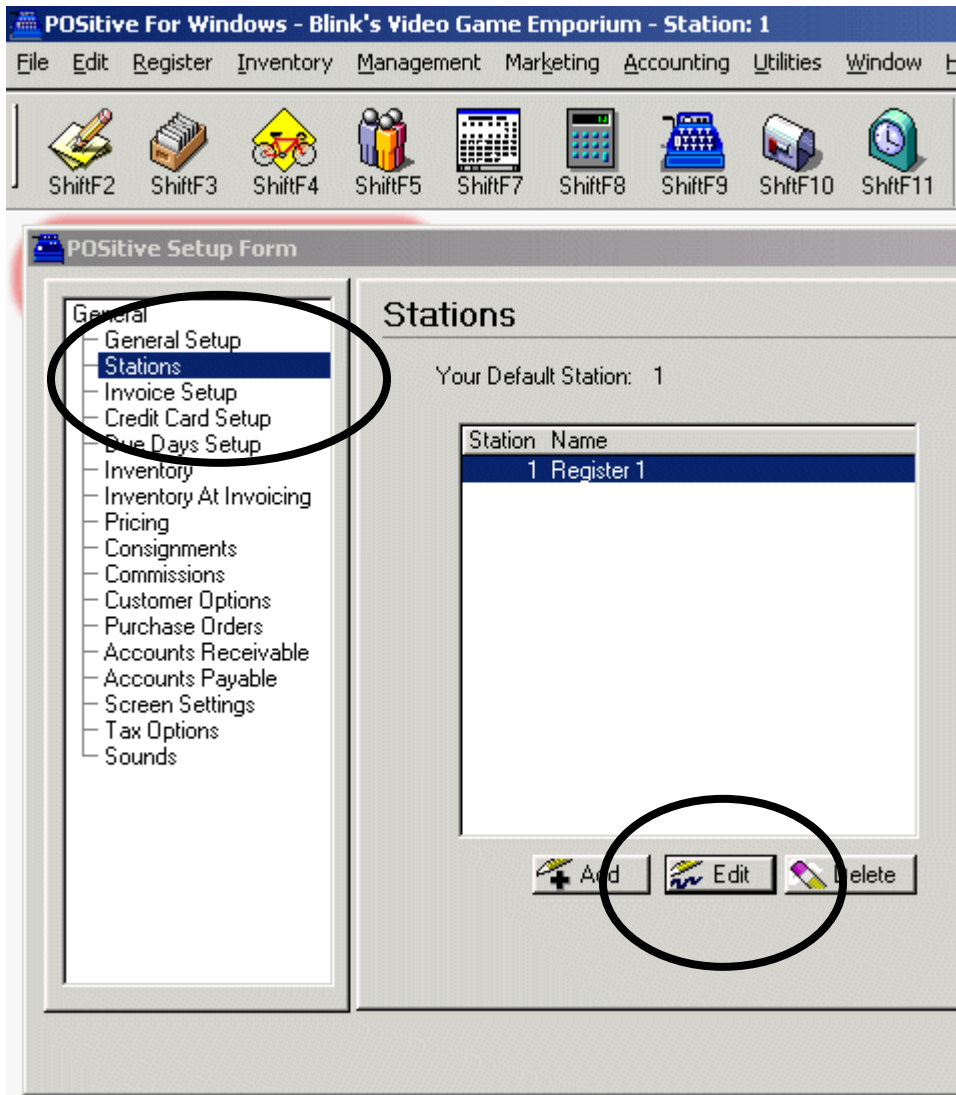
Run POSitive™ for Windows

From the Main Menu select File, System, and System Setup.



Contacting the VRX Company Inc.
Send email to: support@vrxinc.com.

This brings up the POSitive Setup Form. Select **Stations as highlighted below**. Then select Edit.



This brings up the Stations Details menu. Highlight the **Pole Display** menu item.

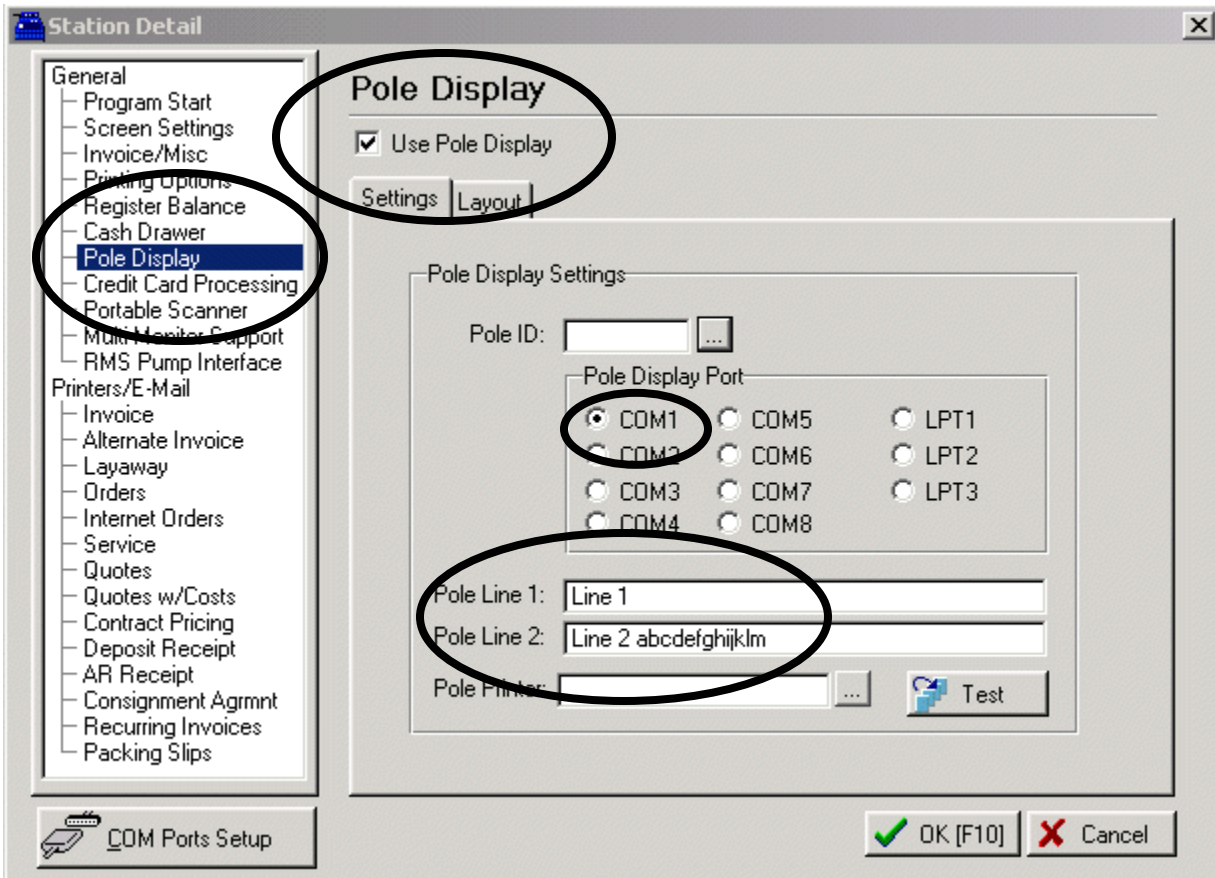
You have several things to set up here.

Select the Use Pole Display box to make the check mark appear.

Select the appropriate COM port. In this example, it is COM1. Use the same COM port to which you have connected the pole display or the Text Inserter.

Type some easy to identify text into the **Pole Line 1** and **Pole Line 2**. At some times this text will display during normal operation of POSitive™ for Windows. Therefore, you might want to enter your store name or an advertisement.

Contacting the VRX Company Inc.
Send email to: support@vrxinc.com.

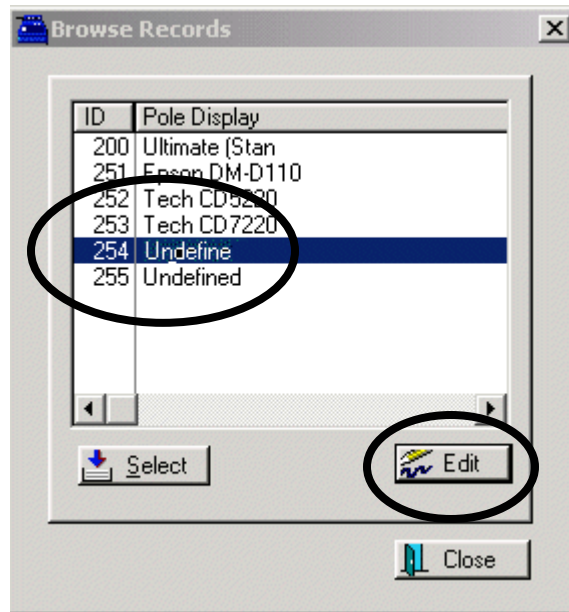


Next, create a new pole display type and ID. Select the square box Pole Display ID box. (Our figures already show Logic Controls, your setup may have some other setup.)



Contacting the VRX Company Inc.
Send email to: support@vrxinc.com.

This brings up the **Browse Records** menu. Highlight the next available Undefined **Pole Display ID** menu item. Highlight to select it and press the **Edit** button.



This brings up the **Pole Display Setup Form**.

Description:

Enter decimal codes below, separated by commas. For example, the Initialize Display code might be 27,64.

Codes For Line 1:

Codes For Line 2:

Characters/Line:

On the **Pole Display Setup Form**, change the **Description** to Logic Controls.

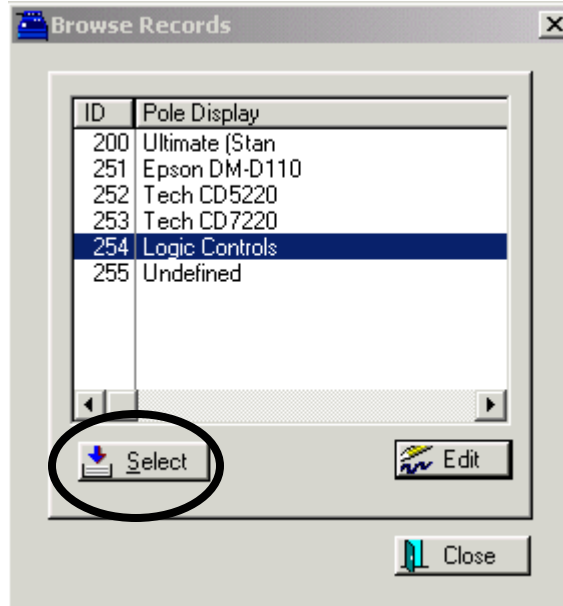
Enter the codes for Line 1 and 2 as above and press the OK button.

If you are interested, here is how this works.

There are many ways to use the control codes for pole displays. Even for people familiar with pole displays, this results in a confusing number of choices. One of the easiest approaches is to clear the display each time before sending new text to the display. The decimal code of “31” resets the display. Reset clears the display and set the display to write to the first character of the first line. After writing to the first line of the display, the POS system sends the standard codes decimal 10 and decimal 13 get to the first position on the next display line. These last two codes are very general. They work with most displays and printers. The ASCII standard calls them “Line Feed” and “Carriage Return” from the early days of mechanical printers.

Contacting the VRX Company Inc.
Send email to: support@vrxinc.com.

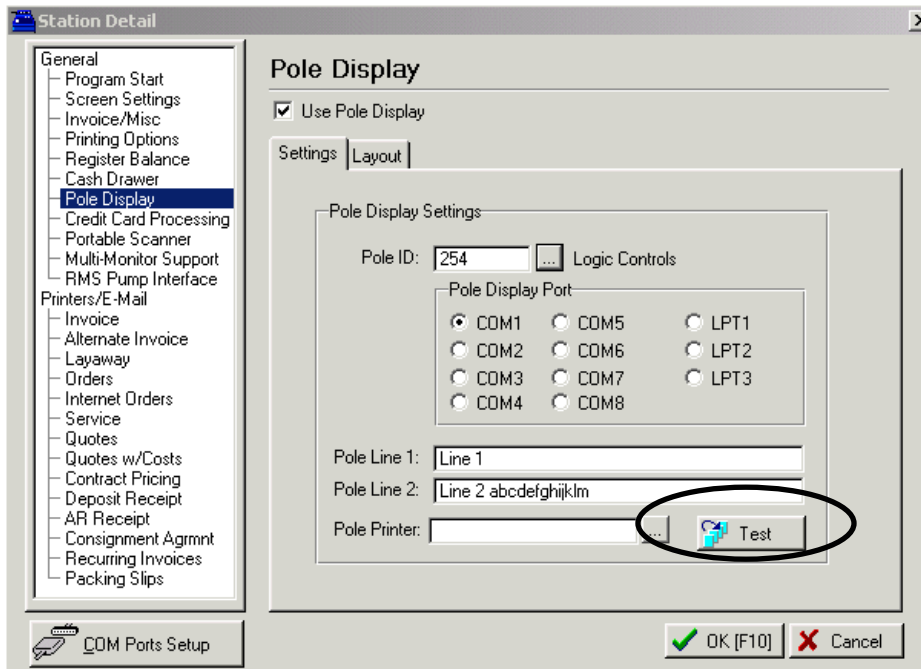
Highlight the new Pole Display type and Select it, which closes the Browse Records dialog.



Test the Pole Display Setup.

From the Station Detail menu, on the lower right is the Test icon.

Press the test icon and observe the monitor. You should see the display text appear.



The “Line 1” message should appear on the top of the screen. The “Line 2 abcdefghijklm” message should appear on the

Contacting the VRX Company Inc.
Send email to: support@vrxinc.com.

second line of the screen. The message should disappear after about 10 seconds.



Ten seconds later.



After the message disappears, you should still see the “Alert” character in the lower right. This character is an indication that the video has a Text Inserter properly connected. Close the dialog boxes and you are now ready to run the point of sale system.

Still having trouble?

If you are still having trouble changing the controller in your text inserter, please look for updated information on our web site at www.vrxinc.com

Contact the VRX Company Inc at support@vrxinc.com or by calling 1-865-805-2437.

Snail Mail at: VRX Company Inc. PO Box 4663, Maryville, TN 37802-4663

Contacting the VRX Company Inc.
Send email to: support@vrxinc.com.