

# VRX Company

Inc.

Application Note:  
DacEasy Point of Sale  
setup for Pole Display

## NOTICES

This document is copyright by VRX Company Inc. Copyright law prohibits reproduction of any part of this document in any form without express written permission.

Notice: The contents of this document are subject to change without notice. At VRX Company Inc., we have made every effort to ensure the accuracy of the contents of this document. However, we reserve the right to change this document for improvement and to correct errors without notice. If you find errors, please bring them to our attention. Our contact information is located at the bottom of this page.

## Table of Contents

<a href="#">Abbreviations and Phrases.....</a>	<a href="#">2</a>
<a href="#">Summary.....</a>	<a href="#">3</a>
<a href="#">Connect Text Inserter to the POS and CCTV.....</a>	<a href="#">3</a>
<a href="#">Setup POS for Pole Display.....</a>	<a href="#">3</a>
<a href="#">Text Inserter in Action.....</a>	<a href="#">5</a>
<a href="#">Having trouble?.....</a>	<a href="#">5</a>

## Abbreviations and Phrases

ASCII	American Standard Code for Information Interchange
CCTV	Closed Circuit Television
Pole Display	Usually a serial text display device with two lines of 20 characters. Common types are LCD and Vacuum Florescent.
POS	Point of Sale

**Table 1 Abbreviations used in this manual**

## Summary

The objective of this document is to define the setup process in DacEasy Point Of Sale for compatibility with a Text Inserter. The method of compatibility will be to interface the Text Inserter as if it is a Logic Controls pole display.

A Text Inserter can find application with many serial devices such as, but not limited to, POS systems, electronic scales and GPS receivers. The following discussion focuses on POS systems but the concepts involved are useful in most applications.

**VRX Company does not recommend using a text inserter on most receipt printers. Use the DacEasy Point of Sale pole display configuration for your loss prevention requirements.**



**Illustration 1: DacEasy Point of Sale Text On Video**

## Connect Text Inserter to the POS and CCTV

Identify a COM port to which to connect the Text Inserter. If necessary, use a USB to COM port adapter. Install such an adapter per the instructions provided with the adapter. Installation of the USB to COM port adapter is beyond the scope of this document.

Connect a DB9 serial cable from the COM port to the Serial Input on the Text Inserter.

If the system will have a real pole display, connect the pole display to the Serial Output of the Text Inserter. A USB pole display will not work. The pole display must have a serial interface.

Connect a monitor to the Video Output of the Text Inserter to a monitor. If necessary make a temporary connection directly to a monitor or make a permanent connection into the CCTV system. It is best if you can see the monitor from the POS as you make the setup changes.

## Setup POS for Pole Display

The following steps will configure a Logic Controls pole display on the COM port to which the Text Inserter is connected.

Run the **DacEasy Point Of Sale Module**.

Under the **Edit** menu, choose **Tables** and then **Cash Registers**.



**Illustration 2: DacEasy Cash Register Setup**

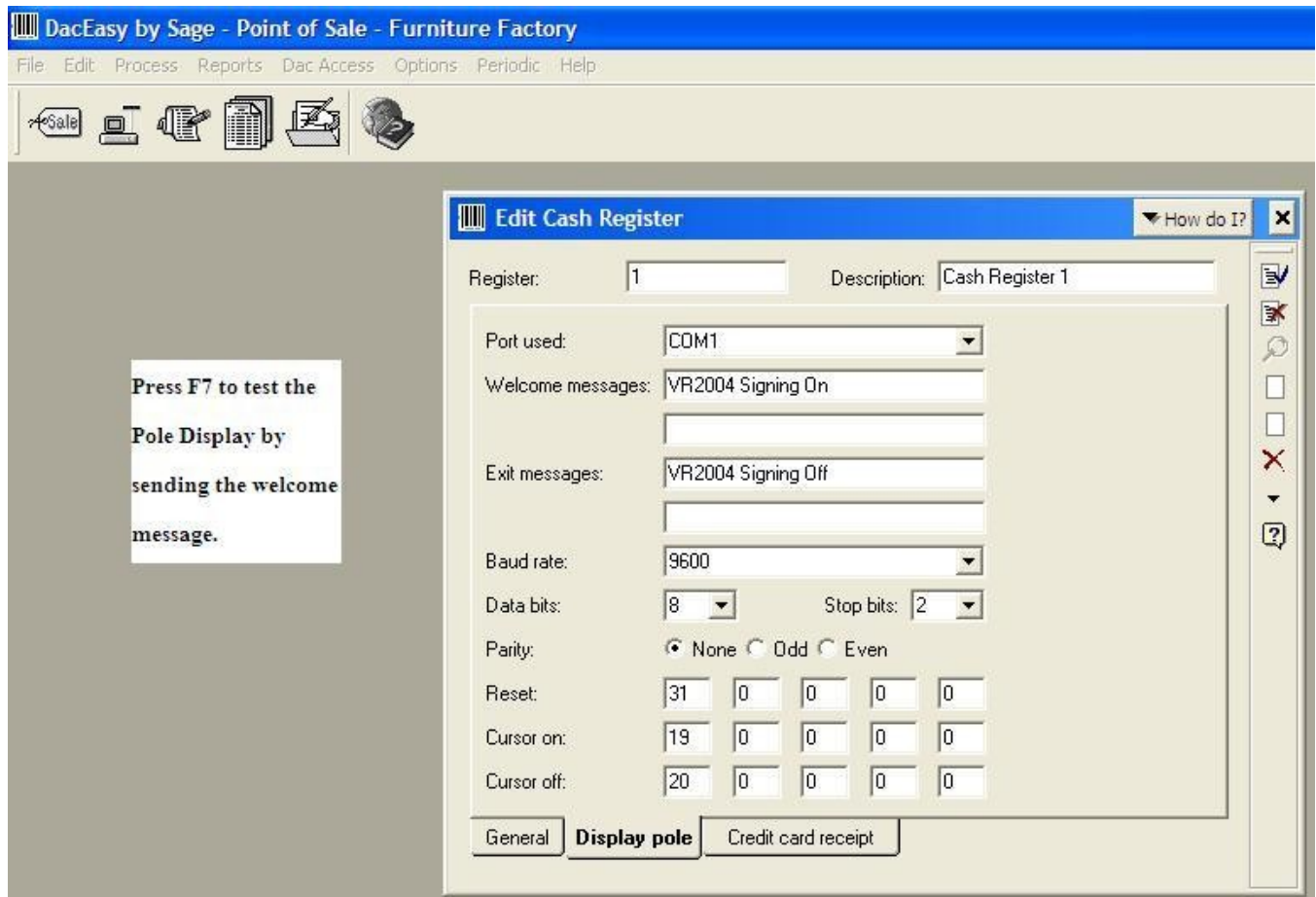
Select the Cash Register to which the Text Inserter is attached.

Select the **Display pole** tab.

Choose the COM port to which the Text Inserter is connected as **Port used**.

Set the **Baud rate** to 9600, the **Data bits** to 8, the **Stop bits** to 2 and the **Parity** to None.

Write any **Welcome messages** and **Exit messages** that you wish to display at the beginning/end of transactions. For testing purposes, add a Welcome message even if it will be removed later.



**Illustration 3: DacEasy Pole Display Setup**

While watching the monitor, press the **F7** key on the computer keyboard. The **Welcome messages** should display over the video.

If the Text Inserter appears to be properly connected, save the Display pole changes and exit the Cash Register setup in DacEasy.

## Text Inserter in Action

Test the Text Inserter by making a transaction.



Illustration 4: A Transaction Inserted onto CCTV Video

## Having trouble?

If you are having compatibility trouble with the POS system and your Text Inserter, please look for updated information on our web site at [www.vrxinc.com](http://www.vrxinc.com)

Contact the VRX Company Inc at [support@vrxinc.com](mailto:support@vrxinc.com) or by calling 1-865-805-2437.  
Snail Mail at: VRX Company Inc. PO Box 4663, Maryville, TN 37802-4663