

# VR2003

Application Note:  
Counter Point™ Setup  
for Line Display

## NOTICES

This document is copyright by VRX Company Inc. Reproduction of any part of this document in any form without the express written permission is prohibited.

Notice: The contents of this document are subject to change without notice. All efforts have been made to ensure the accuracy of the contents of this document. However, we reserve the right to change this document for improvement without notice. If you find errors, please bring it to our attention. Our contact information is located at the bottom of this page.

## Table of Contents

Abbreviations and Phrases .....	2
Objective and Scope .....	2
To Connect Text Inserter with Control Logic Line Display .....	2
To Connect Text Inserter with out a Line Display .....	3
Setup Counter Point™ for a Line Display .....	3
Still having trouble?.....	7

## Abbreviations and Phrases

IC	Integrated Circuit.
OSD	On Screen Display
PC	Personal Computer
Pole display	Also known as Line Display
POS	Point of Sale

**Table 1 Abbreviations used in this manual**

## Objective and Scope

The objective of this document is to define the setup process in Counter Point™ for compatibility with the VR2003 text inserter.

Use the information from the supplier of Counter Point™ to install Counter Point normally.

This document assumes that the current configuration or your POS terminal has no line display or has a Control Logic brand line display. To configure the POS system and text inserter for a pole display other than Control Logic please contact the VRX Company at the phone numbers listed on our web site at [www.vrxinc.com](http://www.vrxinc.com) or by emailing [support@vrxinc.com](mailto:support@vrxinc.com).

## To Connect Text Inserter with Control Logic Line Display

Turn off power to all components including the POS terminal, the line display and the text inserter.

Disconnect the line display from the DB9 COM port on the POS terminal.

Connect the line display DB9 cable to the serial output of the text inserter.

Using a DB9F to DB9M cable, connect the COM port to the serial input port on the text inserter.

Connect the video output of the text inserter to a video monitor.

If you have a camera video feed, connect into the video input of the text inserter.

Apply power and make some normal sales transactions to test the system.

The same message that appears on the pole display should appear on the video monitor. The text on the video monitor automatically erases after a user selectable time. The default time is 10 seconds.

Contacting the VRX Company Inc.  
Send email to: [support@vrxinc.com](mailto:support@vrxinc.com).

## To Connect Text Inserter with out a Line Display

Identify a line display COM port on the POS computer. Choose the lowest number available COM port as a starting point.

Using a DB9F to DB9M cable, connect the COM port to the serial input port on the text inserter.

Connect the video output of the text inserter to a video monitor.

If you have a camera video feed, connect it into the video input of the text inserter.

Apply power and proceed to the next section to set up Counter Point™ for a Control Logic type line display.

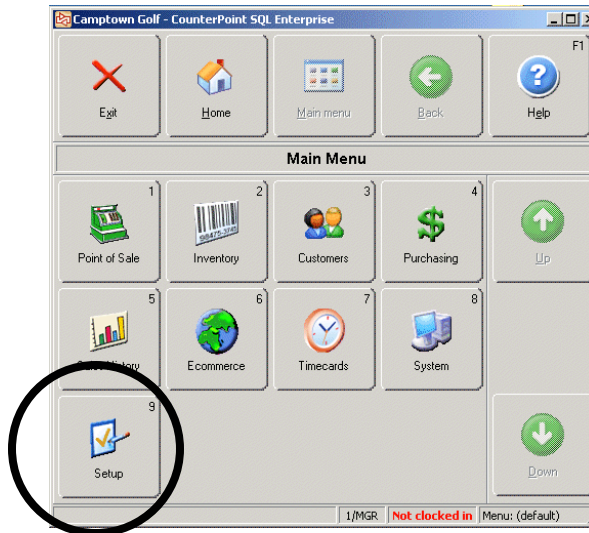
During the setup of Counter Point™, you may discover that Counter Point™ has defaulted to a different COM port and you may have to move the cable to the COM port to which Counter Point™ has defaulted. Please power down the POS terminal and the text inserter before moving the cable.

## Setup Counter Point™ for a Line Display.

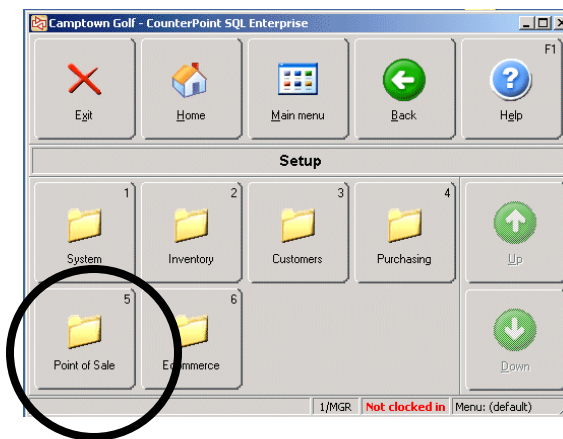
This section will lead you through the setup for a line display of type Control Logic.

Run Counter Point™

From the Main Menu select Setup.

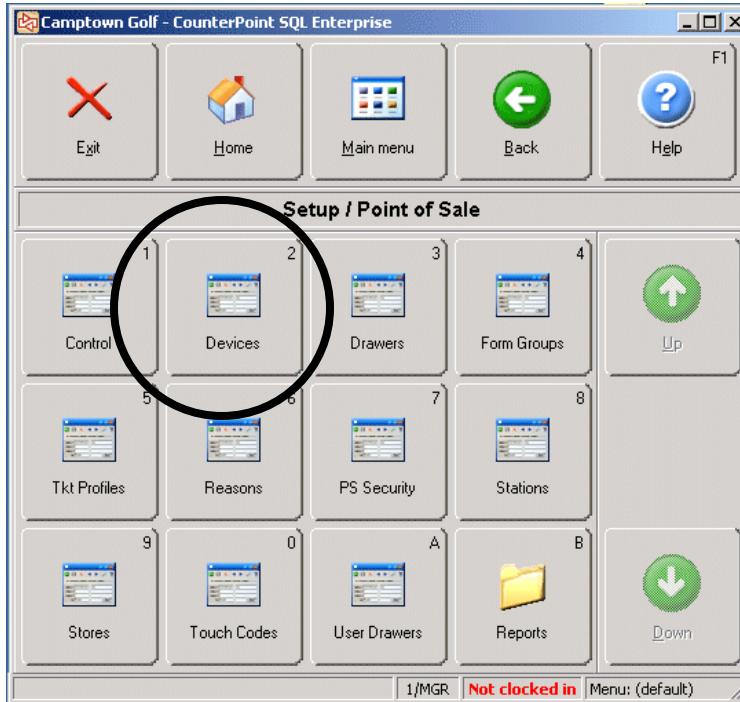


From the Setup Menu select **Point Of Sale**.



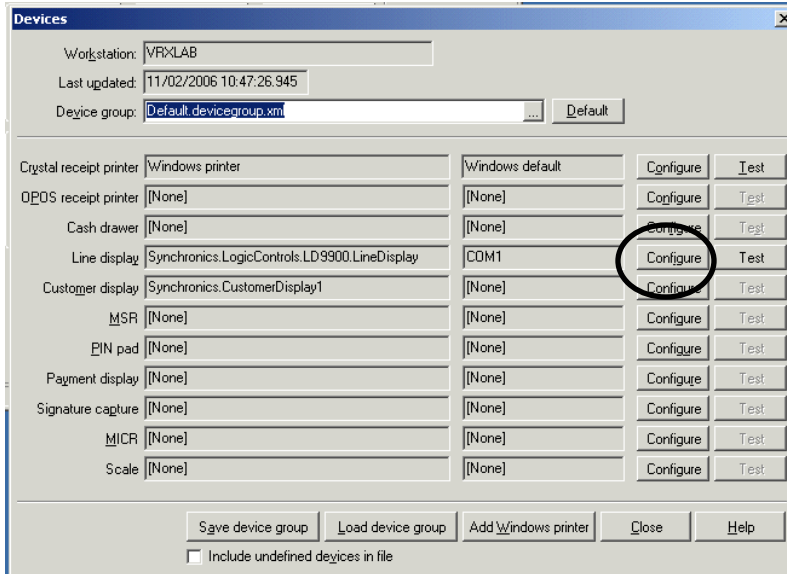
Contacting the VRX Company Inc.  
Send email to: [support@vrxinc.com](mailto:support@vrxinc.com).

From the Point Of Sale menu, select **Devices**.



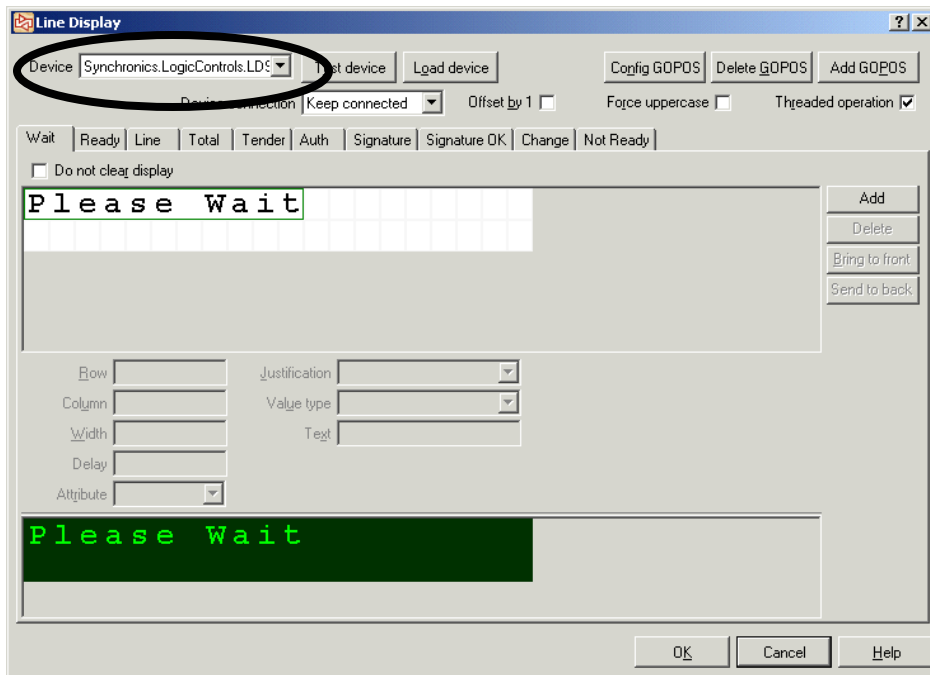
From the Devices menu, note the COM port for the Line Display. (If it is not the same COM port you connected to the text inserter in the previous steps you should cancel the setup, power down the systems and move the DB9F cable to the indicated COM port for the Line Display. Then begin again with this setup.)

Select the **Configure** button for the Line Display.

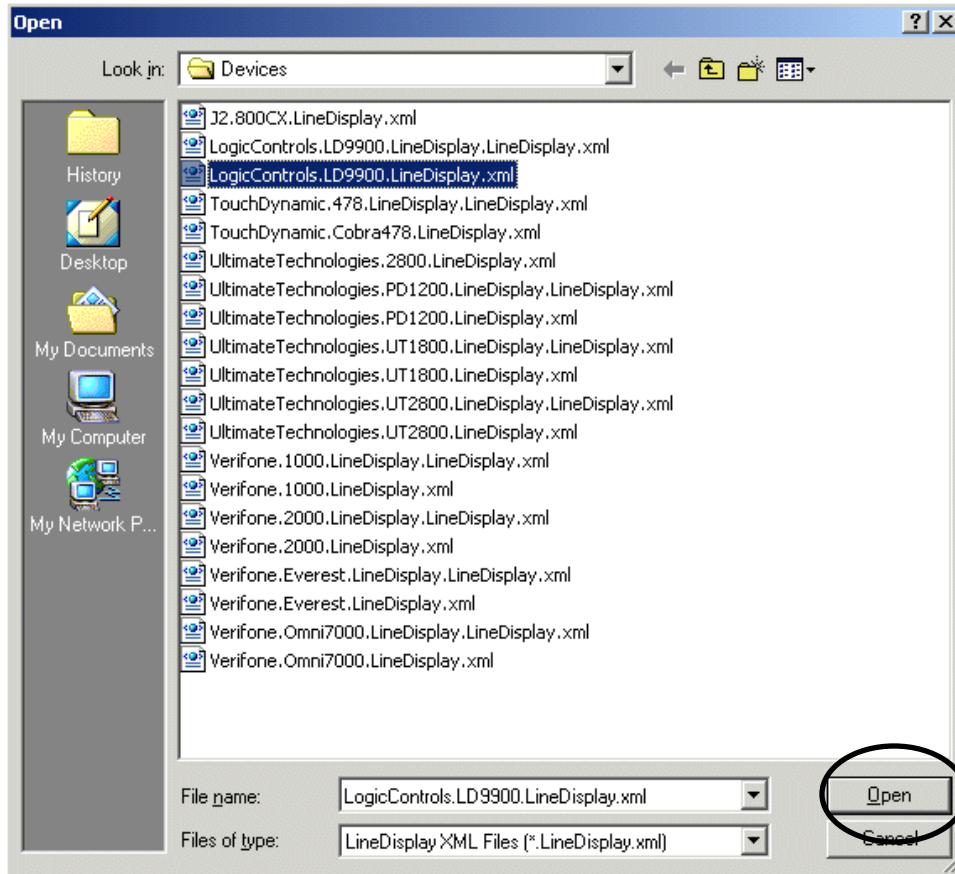


Contacting the VRX Company Inc.  
Send email to: support@vrxinc.com.

From the upper left corner of the Line Display menu, select the **Devices** scroll down box.

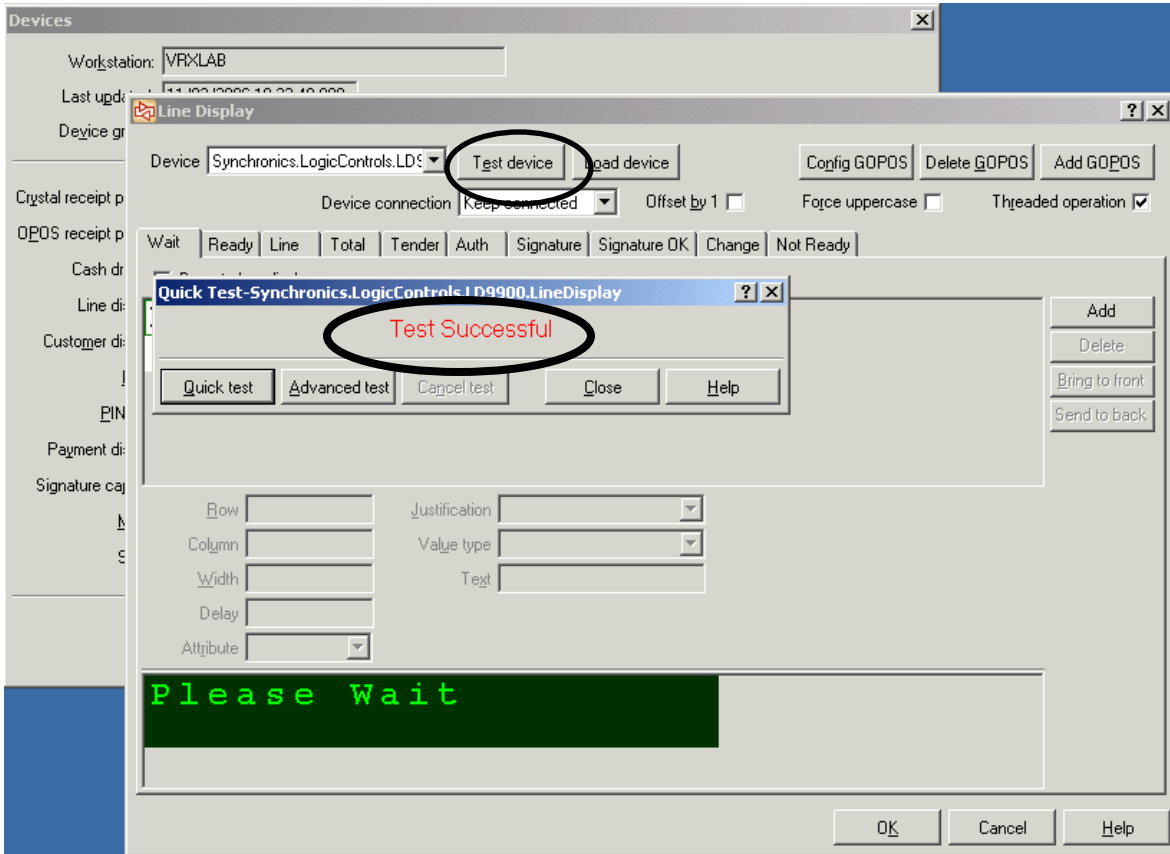


From the scroll down box, select the Logic Controls LD9900 Line Display.xml file for the line display. Press the Open button to select the Logic Controls display and close the dialog box.

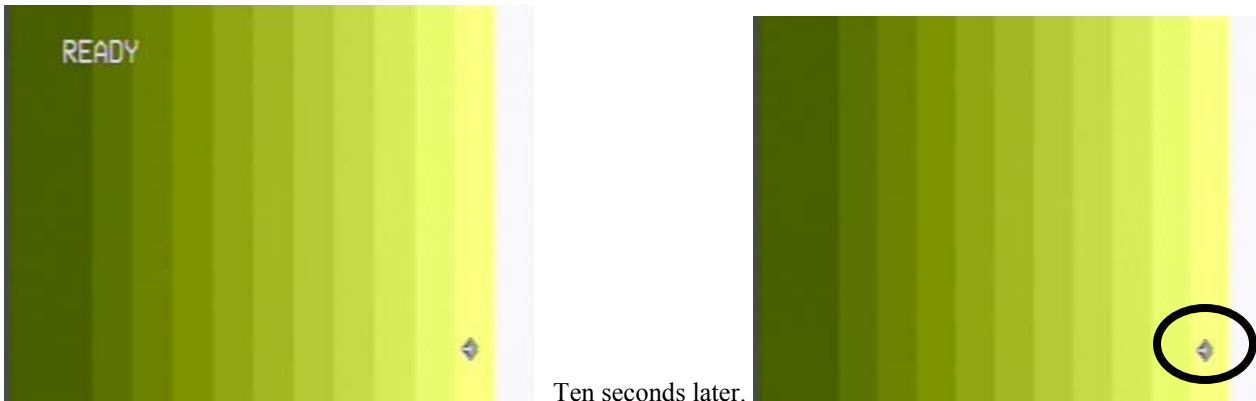


Contacting the VRX Company Inc.  
Send email to: support@vrxinc.com.

From the Line Display menu just to the right of the Device selection box find and press the **Test Device** button. The Test Successful dialog should appear and on the monitor, you should see the display text appear.



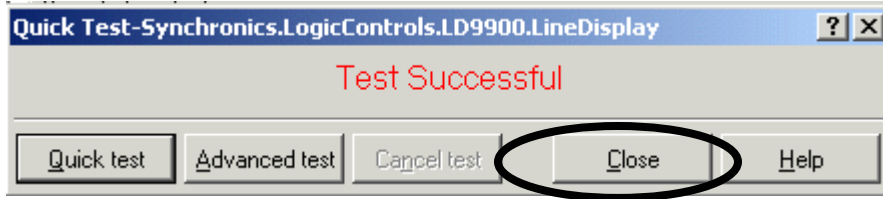
The “Ready” message should appear on the top of the screen. The message should disappear after about 10 seconds.



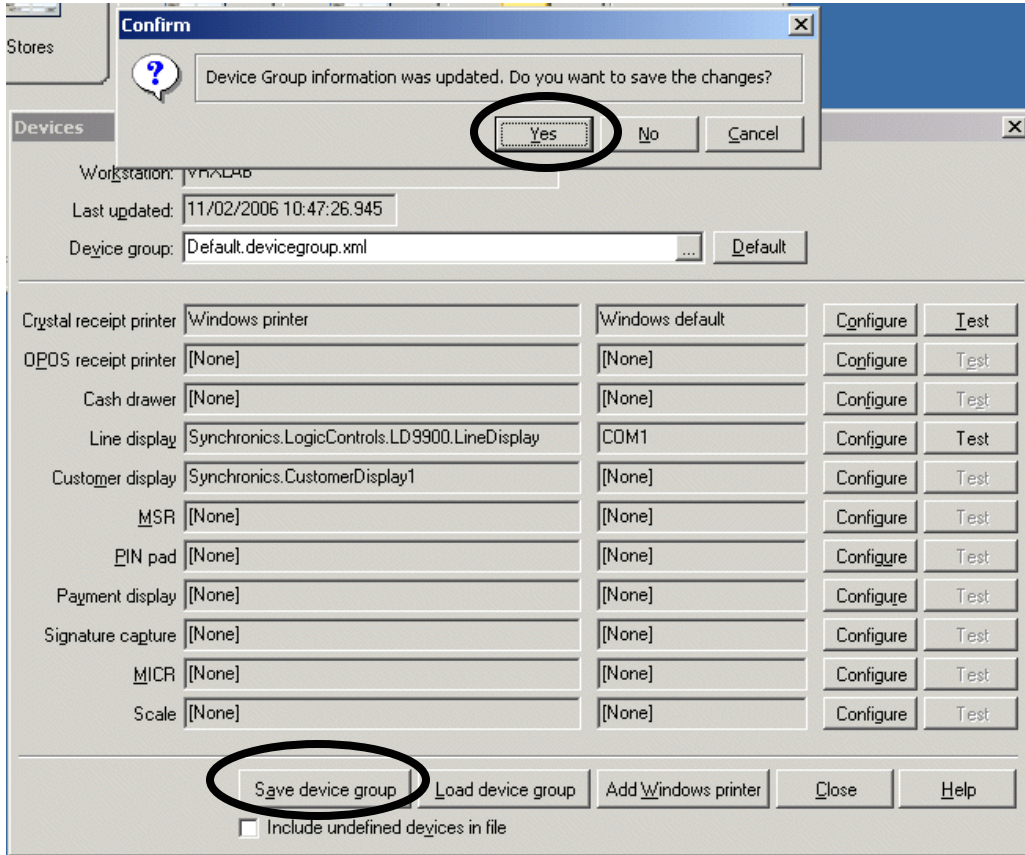
After the message disappears, you should still see the “Alert” character in the lower right. This character is an indication that the video has a Text Inserter properly connected.

Contacting the VRX Company Inc.  
Send email to: [support@vrxinc.com](mailto:support@vrxinc.com).

Press **Close** on the Quick Test dialog box.



Press the **Save device group** button on the bottom of the Devices dialog box. Then answer "Yes" to confirm the save.



You are now ready to run the point of sale system.

## Still having trouble?

If you are still having trouble changing the controller in your text inserter, please look for updated information on our web site at [www.vrxinc.com](http://www.vrxinc.com)

Contact the VRX Company Inc at [support@vrxinc.com](mailto:support@vrxinc.com) or by calling 1-865-805-2437.

Snail Mail at: VRX Company Inc. PO Box 4663, Maryville, TN 37802-4663

Contacting the VRX Company Inc.  
Send email to: [support@vrxinc.com](mailto:support@vrxinc.com).