

VRX Company^{Inc.}

Application Note:
Aldelo Setup for Pole
Display

NOTICES

This document is copyright by VRX Company Inc. Copyright law prohibits reproduction of any part of this document in any form without express written permission.

Notice: The contents of this document are subject to change without notice. At VRX Company Inc., we have made every effort to ensure the accuracy of the contents of this document. However, we reserve the right to change this document for improvement without notice. If you find errors, please bring them to our attention. Our contact information is located at the bottom of this page.

Table of Contents

Abbreviations and Phrases.....	2
To Connect Text Inserter with Posiflex™ Pole Display.....	2
Setup Aldelo for a Posiflex™ Pole Display.....	3
Test the Pole Display Setup.....	5
Setup Aldelo for Other Pole Display Types.....	6
Having trouble?.....	6

Abbreviations and Phrases

ASCII	American Standard Code for Information Interchange
Customer Display	An LCD or FVD character display. See Pole Display.
IC	Integrated Circuit.
OSD	On Screen Display
PC	Personal Computer
Pole Display	Usually a serial text display device with two lines of 20 characters. Common types are LCD and Vacuum Florescent.
POS	Point of Sale

Table 1 Abbreviations used in this manual

Objective and Scope

The objective of this document is to define the setup process in Aldelo for compatibility with the VR2003 Text Inserter.

Use the information from the supplier of Aldelo to install Aldelo normally.

This document assumes that the current configuration of your POS terminal has a Pole Display and you want to configure your POS terminal for a Posiflex™ brand Pole Display. To configure the POS system and Text Inserter for a pole display other than Posiflex™ see the table near the end of this document or contact the VRX Company at the phone numbers listed on our web site at www.vrxinc.com or by emailing support@vrxinc.com.

To Connect Text Inserter with Posiflex™ Pole Display

Turn off the power to all components including the POS terminal, the Pole Display and the Text Inserter.

Disconnect the Pole Display from the DB9 COM port on the POS terminal.

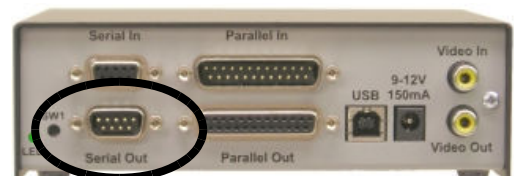
Connect the Pole Display DB9 cable to the serial output of the Text Inserter. This is the bottom DB9, circled at right.

Using a DB9F to DB9M cable, connect the COM port of the POS terminal to the serial input connector on the Text Inserter.

Connect the video output of the Text Inserter to a video monitor.

If you have a camera video feed, connect it into the video input of the Text Inserter.

Contacting the VRX Company Inc.
Send email to: support@vrxinc.com.



Apply power and make some normal sales transactions to test the system.

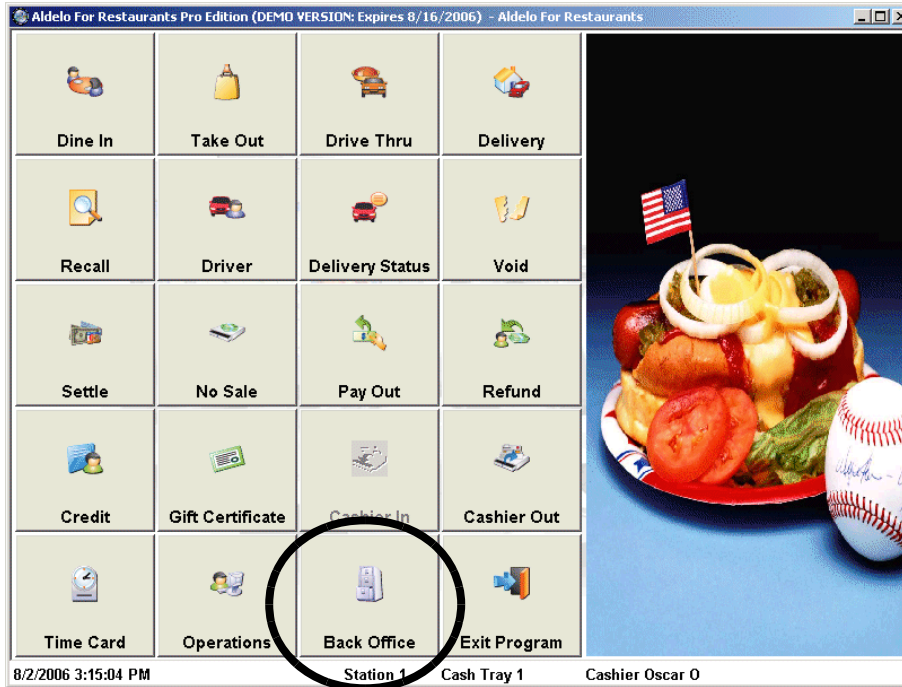
The same message that appears on the pole display, with a similar format, should appear on the video monitor. The text on the video monitor automatically erases after a user selectable time. The default time is 10 seconds. Setup Aldelo for compatibility of the pole display and Text Inserter if necessary.

Setup Aldelo for a Posiflex™ Pole Display.

This section will lead you through the setup for a Pole Display of type Posiflex™.

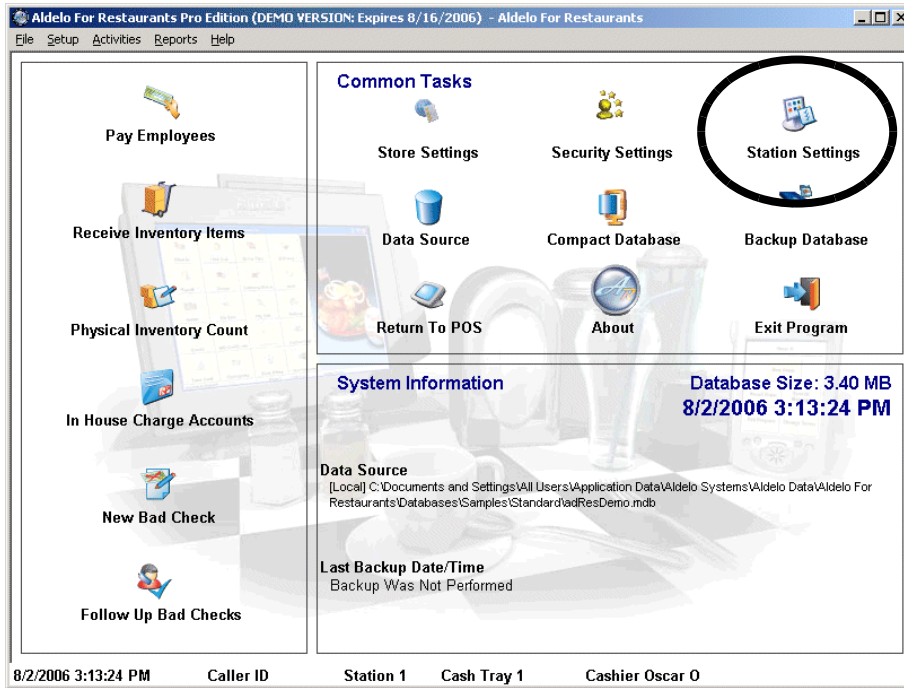
Run Aldelo

From the Aldelo main menu, select the **Back Office** icon.

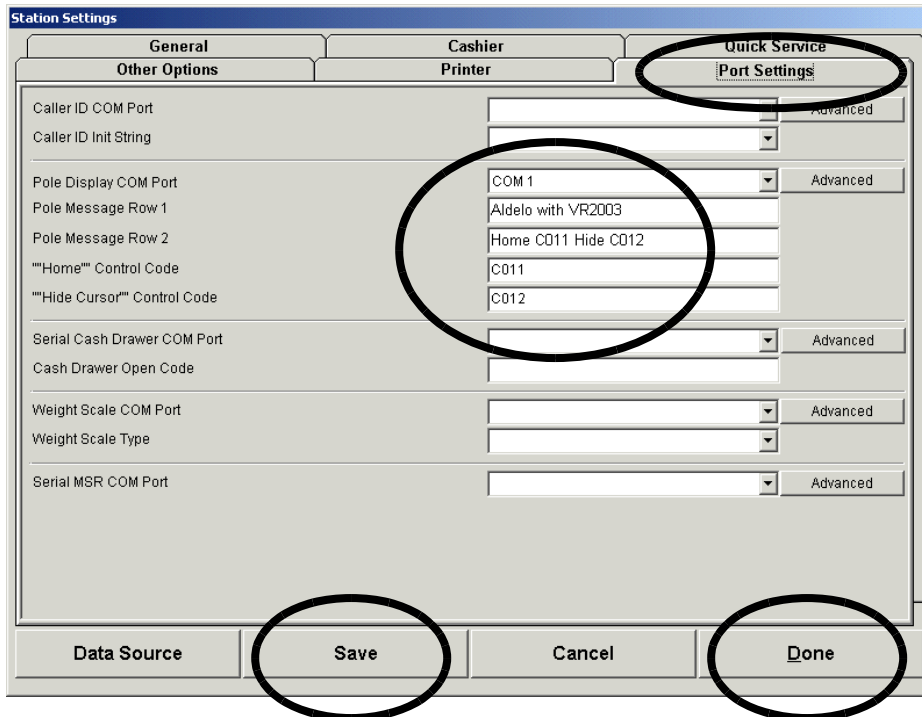


Contacting the VRX Company Inc.
Send email to: support@vrxinc.com.

From the Back Office menu, select **Station Settings**.



This brings up the Station Settings setup form. Select the **Port Settings** tab to set up the pole display COM port, Pole messages for rows 1 and 2, and control codes. For Posiflex™ set the Home control code to C011, and set the Hide Cursor code for C012. Set messages for rows 1 and 2 of your choosing. See the example below. Press the **Save** and then the **Done** icons to return to the Back Office.

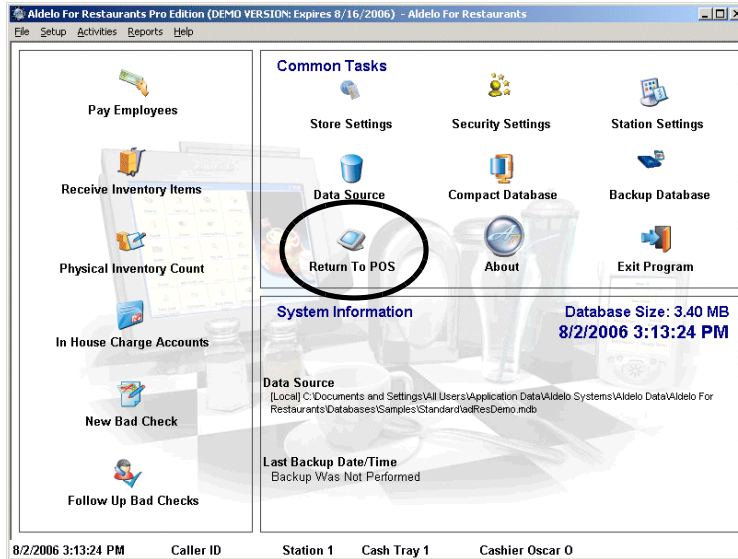


Contacting the VRX Company Inc.
Send email to: support@vrxinc.com.

Test the Pole Display Setup.

Watch the monitor.

From the back office menu, select the **Return to POS** icon.



You should see the display text appear on the monitor with the messages you entered for rows 1 and 2. The line 1 message should appear on the top of the screen. The line 2 message should appear on the second line of the screen. The message should disappear after about 10 seconds.



Ten seconds later.



After the message disappears, you should still see the “Alert” character in the lower right. This character is an indication that the video has a Text Inserter properly connected. You are now ready to run the point of sale system.

Contacting the VRX Company Inc.
Send email to: support@vrxinc.com.

Setup Aldelo for Other Pole Display Types.

You can use other pole display types by choosing codes compatible with both the pole display and the Text Inserter. The table below offers suggested codes.

Display Type	Home Control Code	Hide Cursor Code	Notes
AEDEX	C033 C035 C049		No hide cursor coded required.
Champion DSP800	C004 C001 C080 C049 C023		No hide cursor coded required.
EPSON	C012		No hide cursor coded required.
IEE	C021	C014	
Logic Controls	C031		No hide cursor coded required.
Partner Tech CD7220	C011	C027 C095 C000	
UTC	C031	C020	

Having trouble?

If you are having compatibility trouble with the POS system and your Text Inserter, please look for updated information on our web site at www.vrxinc.com

Contact the VRX Company Inc at support@vrxinc.com or by calling 1-866-543-8398 9-5 Eastern Time.
Snail Mail at: VRX Company Inc. PO Box 4663, Maryville, TN 37802-4663

Contacting the VRX Company Inc.
Send email to: support@vrxinc.com.