

# VR2003

Application Note:

AdvancedPOSme™

Setup for Pole Display

## NOTICES

This document is copyright by VRX Company Inc. Copyright law prohibits reproduction of any part of this document in any form without express written permission.

Notice: The contents of this document are subject to change without notice. At VRX Company Inc., we have made ever effort to ensure the accuracy of the contents of this document. However, we reserve the right to change this document for improvement without notice. If you find errors, please bring them to our attention. Our contact information is located at the bottom of this page.

## Table of Contents

Abbreviations and Phrases .....	2
Objective and Scope .....	2
To Connect Text Inserter with Pole Display.....	3
Setup AdvancedPOSme™ for a Pole Display. ....	3
Test the Pole Display Setup.....	6
Still having trouble?.....	6

## Abbreviations and Phrases

ASCII	American Standard Code for Information Interchange
IC	Integrated Circuit.
OSD	On Screen Display
PC	Personal Computer
Pole display	Also known as Line Display or Customer Display
POS	Point of Sale

**Table 1 Abbreviations used in this manual**

## Objective and Scope

The objective of this document is to define the setup process in AdvancedPOSme™ for compatibility with the VR2003 text inserter.

Use the information from the supplier of AdvancedPOSme™ to install AdvancedPOSme™ normally.

This document assumes that the current configuration of your POS terminal has no Pole Display and you want to configure your POS terminal for a Logic Controls™ brand Pole Display. To configure the POS system and text inserter for a pole display other than Logic Controls™ please contact the VRX Company at the phone numbers listed on our web site at [www.vrxinc.com](http://www.vrxinc.com) or by emailing [support@vrxinc.com](mailto:support@vrxinc.com).

Contacting the VRX Company Inc.  
Send email to: [support@vrxinc.com](mailto:support@vrxinc.com).

## To Connect Text Inserter with Pole Display

Turn off power to all components including the POS terminal, the Pole Display and the Text Inserter.

If the Pole Display is already connected, disconnect the Pole Display from the DB9 COM port on the POS terminal. Make a note of the COM port number for later use when setting up the POS software.

Then connect the Pole Display DB9 cable to the serial output of the text inserter. This is the bottom DB9, circled at right.

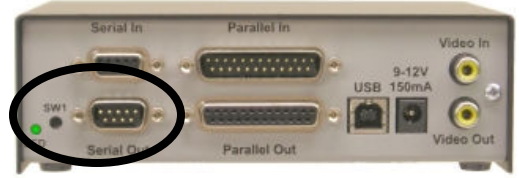
Using a DB9F to DB9M cable, connect the COM port of the POS terminal to the serial input connector on the text inserter.

Connect the video output of the text inserter to a video monitor.

If you have a camera video feed, connect it into the video input of the text inserter.

Apply power and make some normal sales transactions to test the system.

If your system happens to be setup for the text inserter, the same message that appears on the pole display, with a similar format, should appear on the video monitor. The text on the video monitor automatically erases after a user selectable time. The default time is 10 seconds. If the pole display or video monitor is not displaying correctly continue to the setup instructions below for a description of how to setup AdvancedPOSme™ for a Pole Display.

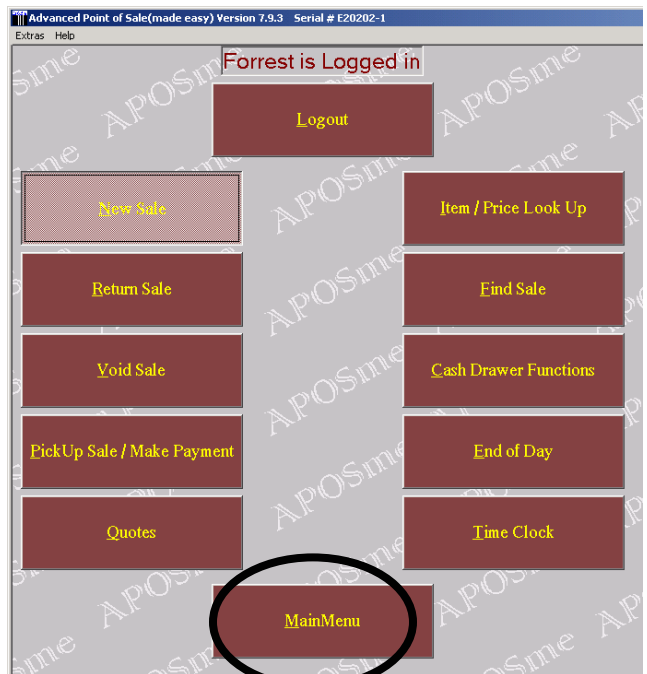
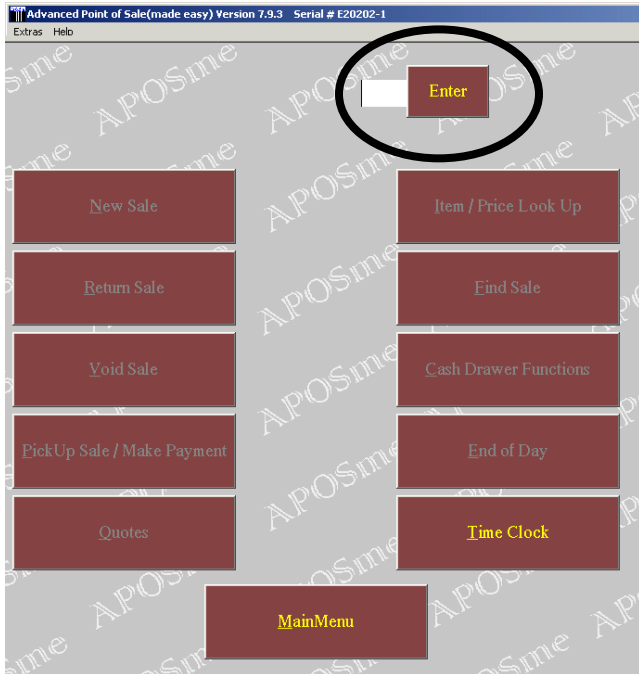


## Setup AdvancedPOSme™ for a Pole Display.

This section will lead you through the setup for a Pole Display of type Logic Controls™. Set up for other pole display type is possible.

Run AdvancedPOSme™.

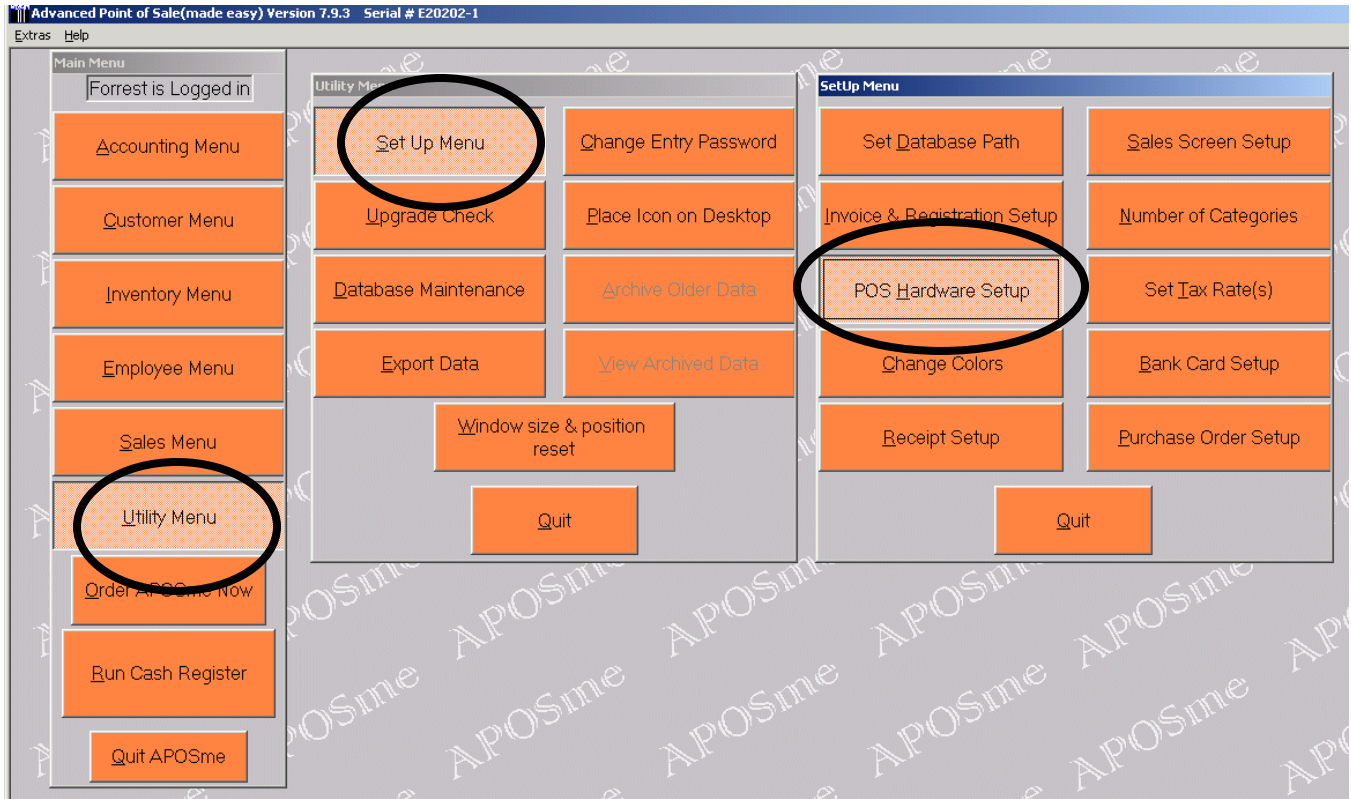
At the Log in menu, enter your 4-digit access code and press the **Enter** icon to log in. Next, select the **Main Menu** icon



Contacting the VRX Company Inc.  
Send email to: support@vrxinc.com.

The log in menu disappears and is replaced by the Main Menu which is the left most in the figure below.

The next succession of menu selections is, in order, **Utility Menu**, **Set Up Menu** and **POS Hardware Setup**.

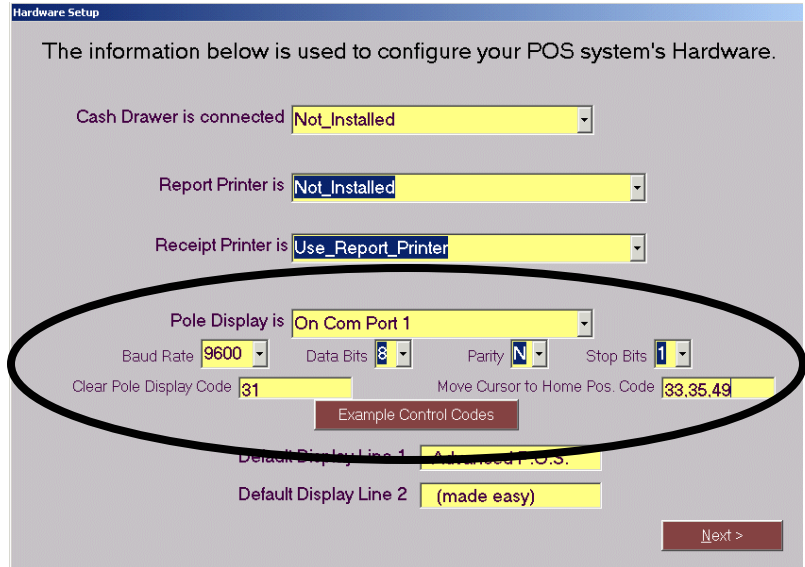


This will open the Hardware Setup menu pictured below.

In the Hardware Setup menu, set the Pole Display for the COM port to which the text inserter is now connected. Set the Baud rate, number of Data Bits, Parity and the number of Stop Bits as appropriate for your text inserter and pole display. Many Pole Displays use the settings pictured below.

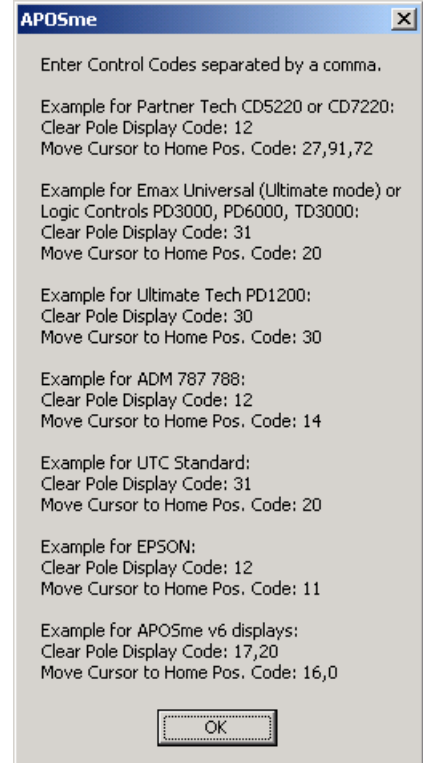
You must also set the two entries for the **Clear Pole Display Code** and **Mover Cursor to Home Pos. Code**. These codes are unique to each manufacture of Pole Display. The example shown is for a Logic Controls™ type Pole Display.

Note: The setup menu for AdvancedPOSme™ expresses these control codes in Decimal or base 10 format. The user manuals for many pole displays give the control codes in Hexadecimal, or base 16, format. Consult a web site for translation of Hexadecimal to Decimal. Currently, a useful web site is <http://www.asciitable.com/>. There you can find a table showing both Decimal and Hexadecimal numbers and the corresponding characters and the standard meaning for many control codes. Unfortunately, many control codes on pole displays are non-standard.



AdvancedPOSme™ has useful examples for control codes built in. Select the icon for Example Control Codes to reveal the codes for several other Pole Display types.

If you use these other types, you may need to change the setup in your Text Inserter for more complete compatibility with these other control codes.



You are done. Exit the setup menus.

Contacting the VRX Company Inc.  
Send email to: support@vrxinc.com.

## Test the Pole Display Setup.

Exit the setup mode. Enter the normal POS mode. Make a few transactions to test the system. The Line 1 message of the pole display should appear on the top of the screen. The Line 2 message should appear on the second line of the screen. The message should disappear after about 10 seconds.



Ten seconds later.



After the message disappears, you should still see the "Alert" character in the lower right. This character is an indication that the video has a Text Inserter properly connected. Close the dialog boxes and you are now ready to run the point of sale system.

## Having trouble?

If you are having compatibility trouble with the POS system and your Text Inserter, please look for updated information on our web site at [www.vrxinc.com](http://www.vrxinc.com)

Contact the VRX Company Inc at [support@vrxinc.com](mailto:support@vrxinc.com) or by calling 1-865-805-2437.

Snail Mail at: VRX Company Inc. PO Box 4663, Maryville, TN 37802-4663

Contacting the VRX Company Inc.  
Send email to: [support@vrxinc.com](mailto:support@vrxinc.com).